



72nd Annual Lucas Oil Race of Champions 250 Presque Isle Downs & Casino Race of Champions Weekend - September 23, 24 & 25

Dear Race Fan and Competitor,

Thank you for making your choice and choosing to participate with us in the 72nd Annual Race of Champions weekend at Lake Erie Speedway in North East, Pennsylvania.

The Race of Champions has seen different formats come and go as well as locations, however Lake Erie is one of the premier facilities in the nation, which has given the event new life and carrying on the passion that goes into running a facility of this magnitude. People at every level are taking interest in the business of short track racing which has a positive effect on all of us. We have made the commitment to Lake Erie Speedway and have already announced our dates through the 2024 season.

We hope that this year's edition provides you with an excellent experience and that Mother Nature cooperates with us. We all know that even the best laid plans may need to be adjusted from time-to-time when Mother Nature decides not to cooperate.

The 72nd Annual Race of Champions 250 for the Race of Champions Asphalt Modified Series carries on the second longest consecutive running motorsports event in North America, second only to the Indianapolis 500, with some of the greatest names in the history of the sport joining us in honor of this special event.

Enclosed is the ultimate Fan and Competitor's Guide to an inside look at the 72nd Annual Race of Champions Weekend and everything that you'll need to know what is going on during this exciting racing event.

Last season, Andy Jankowiak of Tonawanda, N.Y., drove to victory lane and hugged the Al Gerber Memorial Trophy as the champion of the 72nd Annual Race of Champions and on Sunday, September 25th we will have the honor of presenting the 72nd champion of this great race.

We are extremely thrilled to welcome our partners at Lucas Oil, VP Racing Fuels, Hoosier Racing Tire as well Presque Isle Downs & Casino and the Erie Sports Commission. Their passion toward our sport is unrivaled. They join all of our partners who contribute to make the 72nd Annual Race of Champions Weekend a memorable experience for each and every one of you.

We are proud to have you here and we look forward to great week. Thank you for being a part of the Race of Champions family.

Sincerely,

The Race of Champions Families and Management Team



208 E. Bayfront Pkwy • Suite 201 • Erie, PA 16507-2405

Phone: 1.800.524.3743

814.454.1000

Fax: 814.459.0241

eriesportscommission.com

info@eriesports.com

*2014 & 2016 National Sports Commission of the Year
2016 National Marketing Campaign of the Year*

September 12, 2022

Dear Competitors:

Welcome to Erie! We're honored to have the Race of Champions Weekend return to the Erie region. The Race of Champions Weekend has a long-standing tradition of high-quality competition, and we're thrilled that it has chosen to make Erie its home for the next three years. We're looking forward to hosting you for three days of exciting events.

Lake Erie Speedway regularly hosts competitors and fans from all over the country for asphalt racing and special events. The staff is well-versed in giving event participants memorable experiences. As many of you already know, it's a first-class venue, and a perfect fit for racing of this caliber.

In between time at the Speedway, we hope you'll make plans to enjoy the many amenities that the Erie region has to offer. Nearby in North East, you'll find the start of Lake Erie Wine Country – the largest grape growing region east of the Rocky Mountains, which features 22 wineries in the midst of 30,000 contiguous acres of grape vineyards on a 50-mile stretch. Presque Isle Downs & Casino is just one exit away on Interstate 90, featuring 1,580 slot machines, 32 table games, restaurants and more. Continue to Erie, just 15 minutes from Lake Erie Speedway, and you'll find entertainment and fun for the whole family – outdoor recreation, semi-pro sports teams, one of the nation's top indoor water parks, and a wide variety of shopping and restaurant options. Visitors will find all the information they need on local attractions and hotels at VisitErie.com, or on the Hello Erie! Mobile App.

Thank you for making the trip to our great region, and good luck to all competitors!

Best,

Mark Jeanneret
Executive Director
Erie Sports Commission

Ben Huggler
Event Director

ERIE GETS SPORTS!



2022 COMPETITION FORMAT
Event #8
72nd Annual Race of Champions 250
Race of Champions Asphalt Modified Series
Lake Erie Speedway, North East, Pennsylvania
Sunday, September 25, 2022



Race of Champions Primary Contact;

Joe Skotnicki 716-880-0110 jskotnicki@rocmodifiedseries.com

Lake Erie Speedway Primary Contacts;

A.J. Moore 814-725-3303 amoore@lakeerispeedway.com

Event Schedule and General Daily Schedule:



Friday, September 23	10:00 am	Gates Open for Campers and Haulers
	12:00 pm	Pit Sweep
	3:00 pm	Pit Gates Open, Practice for All Divisions
	4:00 pm until Dusk	Practice, Rotating by Division
Saturday, September 24	9:00 am	Gates Open for Campers and Haulers
	10:00 am	Pit Gates Open
	12:00 pm (Noon)	Practice
Sunday, September 25	9:00 am	Pit Gates Open (Haulers Enter and Unload)
	9:15 am	Inspection and Draw for Groups Begin
	10:00 am	Tire Sales – Pit Entrance Building (Tire Sale Order; Group 3, Group 4, Group 1, Group 2)
	10:45 am	Race of Champions Asphalt Modified Series Virtual Driver's Meeting Posted on Social Media
	11:00 am	Practice Begins by Division (two rounds)
	1:15 pm	G-W-C Group Time Trials for the Race of Champions Asphalt Modified Series
	Immediate Following	Qualifying Races (by Division) Race of Champions Asphalt Modified Series (10-laps)
	Followed by;	B-Main(s) if necessary
	3:30 pm Approximate	Opening Ceremonies begin for the 68th Annual Race of Champions 250
	3:45 pm	Pre-Race Begins, Cars Begin to Stage on Front stretch
	3:55 pm	Driver Introductions
	4:20 pm Approx.	Command to Start Engines
	4:38 pm Approx.	Green Flag, 72nd Annual Race of Champions 250
	6:30 pm Approx.	Victory Lane
	8:00 pm	Pit Area Closed

72nd Annual Race of Champions 250 Event Specific Rules;

Note: 2021 Race of Champions Rule Book - <http://www.rocmodifiedseries.com/#!/membershiprules/c9qb> (Cubic Inch and weight displayed on hood is required).

Note: If any competitor must introduce a backup car any time after qualifying, the competitor must relinquish any earned qualifying position and start from the rear of the field for any race in which the backup car is introduced into competition.

Gear Rule: On the following tracks, Lancaster National Speedway, Oswego Speedway and Spencer Speedway, only a 4:86 final gear ratio will be permitted. The final gear ratio may be adjusted from time-to-time to maintain the balance of competition.

Fuel: Only VP Racing Fuels C12 (112/Green) and/or VP Racing Fuels VP110 (110/Purple) will be permitted for competition.

Series and Contingency Decals: Will be verified and must be present for payout of award. Race of Champions, Hoosier and VP Racing Fuels are mandatory. In addition, other contingency decals specific to this event may be mandatory. Other contingency decals are optional but payout is not guaranteed unless decal and product are present.

Pit Stops: During pit stops in the 72nd Annual Race of Champions 250, only one mechanical (1) jack and one (1) air gun may be used during any pit stop to change tires and/or service the vehicle. Only one (1) tire per pit stop may be changed. Only one (1) tire will be permitted to be changed per caution. Only three crew members will be permitted over the wall for any tire change and/or adjustment. Refueling will not take place simultaneously with any tire change and/or other service. The yellow flag will be displayed on or between lap 130 and lap 140 and cars will be brought down pit road. At this time, only fueling / refueling will take place. Adjustments and/or tire changes will not be permitted. In the event that any team and/or competitor makes an adjustment during the fueling stop a one (1) lap penalty will be assessed. Laps will not count once the caution flag is displayed and the counting of laps will not resume until the race returns to green flag conditions following the completion of the fuel stop.

Transponders: If you require a rental transponder and/or need a transponder, the Race of Champions only has a limited amount for rental. Please make arrangements and or contact the Race of Champions.

72nd Annual Race of Champions 250 Event Specific Rules continued;

Tires; Only the "Hoosier" M45, M30 will be permitted for this Race of Champions Asphalt Modified event. The tires used for Qualifying must be purchased at the event. Tires will be marked at purchase. "Tire scuffing" will be permitted for this event. The four (4) tires that are introduced at the start of the green-white-checkered timed hot lap session must be used on the car during the timed hot lap session, the qualifying race and the feature. Tires that are flat or damaged severely as determined by Race of Champions Officials may be changed. In the event of a flat and/or damaged tire, the tire must remain on the working side of the pit wall for inspection and for the tire change to occur without penalty. If the tire crosses on to the non-working side of the wall, a penalty may be issued. For this event, four (4) additional "Change Tire(s)" will be permitted for competition, one (1) per position on the car or any competitor may choose not to change the left front tire only and use one (1) of the four (4) change tires as an additional right side tire. The competitor must declare this prior to the start of the 72nd Annual Race of Champions 250 and have the tire marked for use as a change tire. The "Change Tire(s)" will only be permitted to be introduced during the feature event after the car has completed one green flag lap. Competitors may change the position of the tire(s) on the vehicle (left rear to left front / right rear to right front). A tire may be replaced with a tire previously used in the feature race, provided the tire is a marked tire for the event. In the event a competitor must qualify through a B-Main, that competitor may introduce one (1) new tire that will be marked prior to the B-Main. If that competitor qualifies, they must start the feature on their original qualifying tires. In an effort to maintain and prevent tire alteration if any tire is required to be analyzed, the wheel and tire will be impounded, the payout will be held for the position in which the car finished with the impounded tire. In the event that tire is deemed altered, the payout for that position will be divided equally and awarded to all finishing positions for the event (26 starting positions) minus the cost of the tire analysis. Finishing positions in the race will not be altered based on a penalty. Only Race of Champions Officials will determine if a tire requires analysis. Tires may not be protested. Any competitor found with tires that have been altered will be suspended for a period of 365-days from any Race of Champions event, including, but not limited to the 72nd Annual Race of Champions.

72nd Annual Race of Champions 250 Qualifying Procedure at Lake Erie Speedway:

- **26 Car Field maximum.**
- **26 Car Field maximum.** (Two (2) Provisional positions available to the Top-15 in the current championship standings.) Provisional starting positions will be awarded to the first (two) 2 drivers in the Top-15, who have failed to qualify for the feature race provided the competitor that is eligible for the Provisional practices and makes an attempt to qualify through the qualifying races.
- Group Time Trials will also determine the line-up for the Qualifying Races, based on the driver's best single lap time for each car during group time trials. The top six (6) cumulative times from the Group Time Trial session will be locked into the 72nd Annual Race of Champions 250.
- There will be no redraw for this event. The top six (6) time trailers will each receive 15 bonus points toward the Race of Champions Asphalt Modified Series fueled by VP Racing Fuels.
- Qualifying Races will determine the remaining positions for the feature. Qualifying / Transfer Positions to the 72nd Annual Race of Champions 250 will be based on car count. The starting lineup for the 72nd Annual Race of Champions 250 following the top six (6) from Group Time Trials will be based on the finish of the qualifying races and positions will be established in order ("heads up") from the finishing order of the qualifying races and B-Main(s) if necessary. The top six (6) and Qualifying Races will award Qualifying Race Points.
- **There are Guaranteed Starters for the 72nd Annual Race of Champions are as follows; Bobby Labonte (Carteret Speedway – SMART); Guaranteed starters must practice and make an attempt to qualify. Should any Guaranteed Starter not qualify for one of the 26 positions that establishes the 72nd Annual Race of Champions 250 Starting Field, that driver will be added to the field, provided they have met all of the criteria as set forth, behind the 26 starters, who have earned starting positions in the field. Any other additional starters beyond the Guaranteed Starters will not be added to the starting field for the 72nd Annual Race of Champions 250.**
- **The race will be on the 150-point schedule.**

Event Specific Rules / Qualifying and Race Procedures for the 72nd Annual Race of Champions 250 (including Time Trials, Qualifying Races, B-Mains and the 250-lap Feature):

- The Timed Hot Lap Session will consist of two (2) consecutive green laps with the best recorded lap time being the time of record.
- Qualifying Races will consist of 10 green flag laps. Caution laps will not count.
- All original starts will be side-by-side off turn four at an area designated in the driver's meeting that will be the Start Point until the green flag is displayed.
- All restarts will be in the restart area designated in the driver's meeting.
- The front row must maintain the pace established by the pace car and will be instructed to do so on the one-way and race channel radio. If in the judgment of the Race of Champions Officials, the pace is not maintained a penalty and/or penalties may be issued.
- There will be no "Free Pass" candidate in Qualifying and/or Non-Qualifying Races.
- The races may be extended past their scheduled distance with a green-white-checker finish.
- The 72nd Annual Race of Champions 250 will be a 250-lap race. Cautions laps will count from the original start until the completion of lap 225. After the completion of lap 225, caution laps will not count until the conclusion of the event. The race may be extended past the advertised distance in the event it needs to be concluded with a green-white-checker finish.
- There will be a four (4) wide pace lap. Odd numbered rows pull to the outside, even numbered rows pull up and fill in. This will be instructed over the one-way and race channel radio.
- The front row must maintain the pace established by the pace car and will be signaled to do so, on the one-way radio, if in the judgment of the Race of Champions Officials, the pace is not maintained a penalty and/or penalties may be issued.
- The leader is the control car on all starts and/or restarts. The leader of the race, including on the original start will have "choice" and be signaled on the one-way radio to choose the inside or outside lane prior to reaching the start/finish line. Only the leader has choice, all other competitors must hold their respective restart position in line behind the leader.
- All restarts until the completion of lap 225 will be double-file with lead lap cars to the front - lapped cars will drop to the inside under caution and rejoin the field beginning after the last car on the lead lap in their order of running on the race track at the time of the caution.
- After the completion of lap 225 all restarts will be single file with lead lap cars to the front until the completion of the event.
- You may not lose a lap under caution during this event.
- When the caution is displayed or yellow lights are illuminated, get into single-file order, you will be instructed over the one-way radio when it is time to go double-file and/or restart single file.
- If at any time the red flag is displayed and competitors are signaled to stop due to a red flag condition, cars must come to a complete stop. After the field is stopped and is under control, competitors will be instructed over the one-way radio and any vehicle not involved in the red flag incident that needs to pit for service, will be able to pull up to a designated location prior to being released to the pit area on the one-way radio. Any car that pits during the red flag period will be required to restart at the tail end of the field. If any car pits during a red flag situation without following the instruction over the one-way radio, a one (1)-lap penalty may be issued.

Event Specific Rules / Qualifying and Race Procedures for the 72nd Annual Race of Champions 250 (including Time Trials, Qualifying Races, B-Mains and the 250-lap Feature) continued:

- There will be one (1) car eligible for the 'Free Pass Reward' on each caution. The only car eligible will be the first car one (1) lap down. The 'Free Pass' car will be signaled over the one-way radio to pull up behind the pace car, but must not proceed past the pace car until instructed to do so on the one-way radio.
- The race may extend past the advertised 250-lap distance and could end with a green-white-checker finish. There may be multiple attempts at a green-white-checker finish, however, if the leader receives the white flag and the caution is displayed or the yellow lights are illuminated during the white flag lap the cars will be scored on the basis of their track position. PASSING WILL NOT BE PERMITTED, provided the cars maintain a reasonable speed considering the track conditions. Any cars that may be involved and/or the result of the caution will be scored in their respective position following the incident.
- **One-way radios are mandatory. The one-way frequency will be 454.000. A two-way radio system may be used provided the spotter and/or crew chief monitor the one-way and/or race channel frequency. The race channel frequency will be announced at the event.**
- **Cars will enter the pits off of turn four (4) for "normal" pit service and exit the infield at the track entrance on the back stretch exiting turn two (2).**
- **Pit road speed will be 25 mph.**
- **Pit road will be open and closed. There will also be a flagman at the exit of pit road.**
- **Pit road penalties are included within the Competition Format on a separate page.**
- **All cautions unless otherwise noted on the Race Channel and the One-Way Radio will be "Quickie Cautions", meaning all cars lead lap or not may pit.**
- Cars breaking under green flag conditions may exit the race track at any pit entrance / exit.
- It is mandatory to have the following decals on both sides of the car (Race of Champions, VP Racing Fuels and Hoosier) and the driver must have display (Race of Champions, VP Racing Fuels and Hoosier) on their driver's uniform.
- To be eligible for other available contingencies you must run the decals. Included is a guided map for two available options to place decals on your vehicle.
- Immediately following the conclusion of the event, the first place car needs to go to the scale first, then we need second and third to the scales and to victory lane. Additional vehicles and/or competitors may be signaled to inspection over the one-way radio following the conclusion of the even
- Race of Champions Officials reserve the right to alter the rules of this and/or any event, provided the competitors are given notice (in advance and/or over the one-way radio) due to any circumstance that require such a change or alteration.

Technical Inspection:

- Inspection at Lake Erie Speedway will take place at 9:15 am on Saturday, September 25, 2022:

Inspection to be prepared for:

- Safety and General Inspection - Carburetor Inspection
- General Body Inspection - Pre-Race Engine Inspection
- Fuel Samples from Fuel Cell - Overall Inspection

***** Note:** There will be post-race inspection in the designated inspection area following the completion of Victory Lane Ceremonies.

Race Weights:

- 358 Steel Cylinder Head per RoC Rulebook = 2,575 lbs. / 56% LS
- 18 degree minimum 355 cubic inch, maximum 362 cubic inch = 2,600 lbs. / 56% LS
- 23 degree Maximum 368 cubic inch = 2,600 lbs. / 56% LS
- 23 degree Minimum 369 maximum 376 cubic inch = 7.0 lbs. + 175 lbs / 56% LS
- "NASCAR Spec" Engine = 2,650 lbs. / 56% LS

72nd Annual Race of Champions 250 Starting Line Up :

- | | |
|-------------------------------|-------------------------------|
| 1.) Group Time Trials | 2.) Group Time Trials |
| 3.) Group Time Trials | 4.) Group Time Trials |
| 5.) Group Time Trials | 6.) Group Time Trials |
| 7.) Qualifying Race | 8.) Qualifying Race |
| 9.) Qualifying Race | 10.) Qualifying Race |
| 11.) Qualifying Race | 12.) Qualifying Race |
| 13.) Qualifying Race | 14.) Qualifying Race |
| 15.) Qualifying Race | 16.) Qualifying Race |
| 17.) Qualifying Race | 18.) Qualifying Race |
| 19.) Qualifying Race | 20.) Qualifying Race |
| 21.) Qualifying Race | 22.) Qualifying Race |
| 23.) Qualifying Race (B-Main) | 24.) Qualifying Race (B-Main) |
| 25.) Qualifying Race (B-Main) | 26.) Qualifying Race (B-Main) |

72nd Annual Race of Champions 250 pay out:

Note: For this event, pay off will be made via mail after the conclusion of the event.

1	\$13,571.71
2	5,000
3	3,500
4	3,250
5	3,000
6	2,500
7	2,000
8	1,500
9	1,250
10	1,100
11	1,100
12	1,100
13	1,100
14	1,100
15	1,100
16	1,100
17	1,100
18	1,100
19	1,100
20	1,100
21	1,100
22	1,100
23	1,100
24	1,100
25	1,100
26	1,100

2022 Race of Champions Asphalt Modified Series Schedule:

NP=Non-Point event / SP = Show Up Point event

**All events subject to change.*

DATE	TRACK	LAPS	POINT SCHEDULE	TIRE	WINNER
Saturday, May 7	Chemung Speedrome	75	100	M30/M45	Postponed
Friday, June 3	Spencer Speedway	40	100	M30/M45	Mike Leaty
Saturday, June 11	Lancaster Motorplex	TBD	100	M30/M45	Mike Leaty
Saturday, July 1	Spencer Speedway	50	100	M30/M45	Patrick Emerling
Saturday, July 30	Holland International Speedway	110	100	M30/M45	Zane Zeiner
Saturday, August 13	Lancaster Motorplex	60	100	M30/M45	Patrick Emerling
Saturday, August 20	Chemung Speedrome	110	100	M30/M45	Austin Kochenash
Friday, September 2	Spencer Speedway	68	100	M30/M45	Matt Hirschman
Sunday, September 11	Lancaster Motorplex	TBD	150	M30/M45	Postponed
Sunday, September 25	Lake Erie Speedway	250	150	M30/M45	

2022 Decal and Contingency Award Programs

- More partners and awards may be added during the season.
- In order to be eligible for awards teams must display decal on left and right side of car in a visible location near the A-Pillar.
- No alterations may be made to decals and logos may not be reproduced or incorporated into wraps.
- If the initial winner of an award is not running the decal, all awards will shift to the next eligible competitor as specified above.

- **Mandatory for all competitors on top/forward corner of door (first, second, third and fourth decal):**

- **No specific award for any of the mandatory below;**



Decal Required for Program Participation.

RACE OF CHAMPIONS ASPHALT MODIFIED SERIES GENERAL TIRE POLICY AND GENERAL TIRE TRANSPORT POLICY – EDITED FOR 2022

- The Race of Champions will transport six (6) tires per team beginning with the Friday, June 3, 2022 at Spencer Speedway. A maximum of six (6) tires will be sold to any team competing at Spencer Speedway on Friday June 3, 2022 to any team.
- 4 tires mounted and 2 tires unmounted.
- Only tires that are purchased at the event, on the day of the race may be introduced into transport. Team's should consider introducing a left front into transport. Race events following the June 3, 2022 at Spencer Speedway event may become three (3) tire events. The event at Lancaster Motorplex on Saturday, June 11 will be a three (3) tire purchase event. Please note that any "new" cars to the series will have the ability to purchase four (4) tires for the event.
- Tires must be signed in and out for inventory purposes.
- All wheels and unmounted tires must be labeled (inside unmounted tires) with car number and/or team name.
- Inventoried tires will not be released at any event until the tires are released from the sale of new tires.
- The Race of Champions will establish groups for tire purchase;
 - The groups will be determined based on a draw at the first event (the same draw that is used for establishing groups for qualifying). The draw must be complete before tire sales begin. If a team representative has not drawn prior to the time tire sales begin, they will be drawn for and place in the group in accordance with that draw.
 - For the remainder of the season, the tire groups will be established, divided into 4 groups.
 - Two (2) credentials will be issued for each car and must be used for the specific group as labeled.
 - Each group will have ten (10) minutes each to choose and measure tires before the next group is permitted to enter.
 - Only two (2) team members will be permitted in the tire impound sale area for any group at any time.
 - Teams will be required to sign out each tire upon purchase and registration of the tire for the event.
 - After each event, the groups will rotate order. The established tire selection order for the first event will be Group 1; followed by Group 2; followed by Group 3; followed by Group 4. The order for the second event will be Group 2; followed by Group 3; followed by Group 4; followed by Group 1.
 - The lineup from the first event will be maintained and as any new team(s) enter any race, the team will draw and be placed in a group, based on the initial draw at the first event and remain in that group for the remainder of the season.
- Beginning with event for the 2018 season, any tire that is written on in any manner will not be eligible for return and/or trade during the initial sizing process. Please consider using tape to mark your tires during the purchase, mounting and sizing process. Tires must not be written on.
- Any team and/or team member that loses a Tire Group Credential will be subject to a \$20.00 replacement charge.
- Any team member that replicates and/or creates a counterfeit Tire Group Credential and is caught using it will be Indefinitely Suspended from all Race of Champions events, immediately.

*** TIRES MAY NOT BE RETURNED – THIS IS A HOOSIER RACING TIRE POLICY ***

Race of Champions Pit Road / Pit Rules

Pit Road / Pit Rule(s) Penalty Reference:

Pit Road Infraction

Penalty

Pitting before pit road is open (under red flag)	Tail End of the Field (Under Caution) Stop & Go (Under Green)
Pitting too soon / Out of Order	Tail End of the Field
Must Enter Pit Road Single File	Tail End of the Field
Speeding on Pit Road, Entering and/or Exiting (First Penalty)	Tail End of the Field (Under Caution) Stop & Go (Under Green)
Speeding on Pit Road, Entering and/or Exiting (Second Penalty) Green)	1 (one) lap (Under Caution or Under Green)
Passing to the inside of another competitor on pit road in a racing manner Green) (All Passing Must be to the Outside on pit road)	1 (one) lap (Under Caution or Under Green)
Pitting prior to the original green flag for the race and adding fuel	1 (one) lap
Pulling up to pit – (advancing on race track)	1 (one) lap
Driving through 3 or more pit boxes prior to assigned pit stall	Tail End of the Field (Under Caution) Stop & Go (Under Green)
Pitting outside of the assigned pit box (by more than one (1) box either direction)	1 (one) lap
Too many crew members in pit box / pit service area	Tail End of the Field (Under Caution) Stop & Go (Under Green)
Removing Equipment from assigned pit box / pit service area	Stop & Go (Under Green) Tail End of the Field (Under Caution)
Non-compliant refueling	Tail End of the Field (Under Caution) Stop & Go (Under Green)
Entering and/or exiting pit road in any non-defined location	1 (one) lap
Running past the stop & go sign exiting pit road on to the race track in turn two	1 (one) lap
Race Vehicles may not be pushed down pit road by push vehicle (past the pit road flag man)	
Race Vehicles will not be pushed down pit road to their pit stall by a push truck.	
For any pitstop to be considered official, the car must come to a complete stop in its assigned pit stall	
Pit road will remain closed until the field is 'under control'. When pit road is 'open' – lead lap cars may pit the first time by. Lapped cars may pit the second time by. If a "QUICKIE" caution is called over the race frequency and the one-way radio, all cars may pit together.	
Race Penalties:	
Passing the Pace Vehicle	1 (one) lap
Disobeying an 'Official' directive or request	Official Discretion
Intentionally Causing a Caution	1 (one) lap
Disobeying a Black Flag	Official Discretion



2022 COMPETITION FORMAT
RACE OF CHAMPIONS SPORTSMAN MODIFIEDS
Race of Champions Sportsman Modified Series – “PID&C 72”
Presque Isle Downs & Casino Race of Champions Weekend
Lake Erie Speedway, North East, Pennsylvania
Saturday, September 24, 2022

Race of Champions Primary Contact;

Joe Skotnicki 716-880-0110 jskotnicki@rocmodifiedseries.com

Lake Erie Speedway Primary Contacts;

A.J. Moore 814-725-3303 amoore@lakeeriestrategy.com

Event and Daily Schedule:

Friday, September 23		
	10:00 am	Gates Open for Campers and Haulers
	12:00 pm (Noon)	Pit Sweep
	1:00 pm	Pit Gates Open, Practice for All Divisions
	4:00 pm until Dusk	Practice, Rotating by Division
Saturday, September 24		
	9:00 am	Gates Open for Campers and Haulers
	10:00 am	Pit Gates Open, Practice for All Divisions
	10:15 am	Inspection and Draw Open for All Divisions
	11:00 am	Tire Sales Begin
	11:30 am	Driver's Virtual Meeting (by division – Sportsman; Super Stocks and Street Stocks)
	12:00 pm (Noon)	Practice, Rotating by Division
	2:30 pm	Qualifying Races by Division:
		Late Models (8-laps)
		NYPA TQ Midgets (8-laps)
		Siuper Stock Series 8-laps)
		Sportsman Modifieds (10-laps)
	Followed by;	B-Main / Non-Qualifier Races if Necessary by Division:
		Sportsman Modified (12-laps)
		Race of Champions Super Stocks (10-laps)
		Four Cylinder Dash Series (8-laps)
	Followed by;	Sportsman Modified Driver Introductions (Driver's in car, staged in order on Front Stretch)
	Followed by;	Race of Champions Sportsman Modified "PID&C 72" (72-laps - Cautions do not count)
	Followed by;	Victory Lane
	9:30 pm	Pit Area Closed

"PID&C 72" Event Specific Rules;

*Note: 2022 Race of Champions Rule Book - <http://www.rocmmodifiedseries.com/#/membershprules/c9qb> (Engine Package and Weight Displayed on Hood – written on duct tape is acceptable).

Gear Rule: On the following tracks, Lancaster National Speedway, Oswego Speedway and Spencer Speedway, only a 4:86 final gear ratio will be permitted. **At Lake Erie Speedway a maximum 5:83 final gear ration will be permitted.** The final gear ratio may be adjusted from time-to-time to maintain the balance of competition.

Tires; All tires for this event must be purchased at Lake Erie Speedway on the day of this event. Only the "Hoosier" 1070 will be permitted for this Race of Champions event. In an effort to maintain and prevent tire alteration, a minimum of two (2) tires must be purchased at the event. Any team may introduce four (4) tires for new or previously used "scuff" tires into competition. If any tire is required to be analyzed, the wheel and tire will be impounded, the payout will be held for the position in which the car finished with the impounded tire. In the event that tire is deemed altered, the payout for that position will be divided equally and awarded to all finishing positions for the event (30 starting positions) minus the cost of the tire analysis. Finishing positions in the race will not be altered based on a penalty. Only Race of Champions Officials will determine if a tire requires analysis. Tires may not be protested. Any competitor found with tires that have been altered will be suspended for a period of 365-days from any Race of Champions event, including, but not limited to the 68th Annual Race of Champions. Tires will be introduced at the start of qualifying races and must be used on the car throughout the qualifying race(s), B-Main and the feature. If that competitor qualifies, they must start the feature on their original qualifying tires. There will be no tire changes permitted during the event unless the tire is flat or damaged severely as determined by Race of Champions Officials. In the event of a flat and/or damaged tire, the tire must remain on the working side of the pit wall for inspection and for the tire change to occur without penalty. If the tire crosses on to the non-working side of the wall, a penalty may be issued.

Note: If any competitor must introduce a backup car any time after qualifying, the competitor must relinquish any earned qualifying position and start from the rear of the field for any race in which the backup car is introduced into competition.

Fuel: Only VP Racing Fuel VP110 (110/Purple) will be permitted for competition.

Series and Contingency Decals: Will be verified and must be present for payout of award. Race of Champions, Hoosier and VP Racing Fuels are mandatory. In addition, other contingency decals specific to this event may be mandatory. Other contingency decals are optional but payout is not guaranteed unless decal and product are present.

Transponders: If you require a rental transponder and/or need a transponder, the Race of Champions only has a limited amount available for rental. Please make arrangements and/or contact the Race of Champions.

Race of Champions Asphalt Modified Qualifying Procedure Race of Champions Sportsman Modified "PID&C 72" at Lake Erie Speedway:

- **30** Car Field maximum.
- Two (2) Provisional positions available to the Top-15 in the current champions standings. Provisional starting positions will be awarded to the first two (2) drivers in the top-15, who have failed to qualify for the feature race, provided the competitor that is eligible for the Provisional starting position practices and makes an attempt to qualify through the qualifying races. Provisional starting positions may extend the field to a maximum of 32 cars.
- Qualifying Race Starting Position will be determined the overall fastest times posted in the final hot lap session. In the event that transponders are not used, the qualifying race lineups will be based on the draw.
- Top 12 qualifiers in qualifying races will redraw for starting position in the 54-lap feature.

Event Specific Rules / Qualifying and Race Procedures for the Race of Champions Crown Royal Classic Tribute to Joe Reilly 54 (including Time Trials, Qualifying Races, B-Mains and the 72-lap Feature):

- The Timed Hot Lap Session will be cumulative in the final hot lap session with the best recorded lap time being the time of record. (No group qualifying).
- Qualifying Races will consist of 10 green flag laps. Caution laps will not count.
- All original starts will be side-by-side off turn four at an area designated in the driver's meeting that will be the Start Point until the green flag is displayed.
- All restarts will be in the restart area designated in the driver's meeting.
- The front row must maintain the pace established by the pace car and will be instructed to do so on the one-way and race channel radio. If in the judgment of the Race of Champions Officials, the pace is not maintained a penalty and/or penalties may be issued.
- There will be no "Free Pass" candidate in Qualifying and/or Non-Qualifying Races.
- The races may be extended past their scheduled distance with a green-white-checker finish.
- The Race of Champions PID&C 72 will be a 72-lap race. Cautions laps will not count. The race may be extended past the advertised distance in the event it needs to be concluded with a green-white-checker finish.
- The front row must maintain the pace established by the pace car and will be signaled to do so, on the one-way radio, if in the judgment of the Race of Champions Officials, the pace is not maintained a penalty and/or penalties may be issued.
- The leader is the control car on all starts and/or restarts. The leader of the race, including on the original start will have "choice" and be signaled on the one-way radio to choose the inside or outside lane prior to reaching the start/finish line. Only the leader has choice, all other competitors must hold their respective restart position in line behind the leader.
- All restarts until the completion of lap 62 will be double-file with lead lap cars to the front - lapped cars will drop to the inside under caution and rejoin the field beginning after the last car on the lead lap in their order of running on the race track at the time of the caution.
- After the completion of lap 62 all restarts will be single file with lead lap cars to the front until the completion of the event.
- You may not lose a lap under caution during this event.
- When the caution is displayed or yellow lights are illuminated, get into single-file order, you will be instructed over the one-way radio when it is time to go double-file and/or restart single file.
- If at any time the red flag is displayed and competitors are signaled to stop due to a red flag condition, cars must come to a complete stop. After the field is stopped and is under control, competitors will be instructed over the one-way radio and any vehicle not involved in the red flag incident that needs to pit for service, will be able to pull up to a designated location prior to being released to the pit area on the one-way radio. Any car that pits during the red flag period will be required to restart at the tail end of the field. If any car pits during a red flag situation without following the instruction over the one-way radio, a one (1)-lap penalty may be issued.
- The race may extend past the advertised 75-lap distance and could end with a green-white-checker finish. There may be multiple attempts at a green-white-checker finish, however, if the leader receives the white flag and the caution is displayed or the yellow lights are illuminated during the white flag lap the cars will be scored on the basis of their track position. **PASSING WILL NOT BE PERMITTED**, provided the cars maintain a reasonable speed considering the track conditions. Any cars that may be involved and/or the result of the caution will be scored in their respective position following the incident.
- **One-way radios are mandatory. The one-way frequency will be 454.000. A two-way radio system may be used provided the spotter and/or crew chief monitor the one-way and/or race channel frequency. The race channel frequency will be announced at the event.**
- Cars breaking under green flag conditions may exit the race track at any pit entrance / exit.
- It is mandatory to have the following decals on both sides of the car (Race of Champions, VP Racing Fuels and Hoosier) and the driver must have display (Race of Champions, VP Racing Fuels and Hoosier) on their driver's uniform.
- To be eligible for other available contingencies you must run the decals. Included is a guided map for two available options to place decals on your vehicle.
- Immediately following the conclusion of the event, the first place car needs to go to the scale first, then we need second and third to the scales and to victory lane. Additional vehicles and/or competitors may be signaled to inspection over the one-way radio following the conclusion of the event.
- Race of Champions Officials reserve the right to alter the rules of this and/or any event, provided the competitors are given notice (in advance and/or over the one-way radio) due to any circumstance that require such a change or alteration.

Technical Inspection:

Inspection at Lake Erie Speedway will take place at 10:15 am on Saturday September 24, 2022

Inspection to be prepared for:

- Safety and General Inspection - Carburetor Inspection
- General Body Inspection - Pre-Race Engine Inspection
- Fuel Samples from Fuel Cell - Overall Inspection

***** Note:** There will be post-race inspection in the designated inspection area following the completion of Victory Lane Ceremonies.

Race Weights:

- Sportsman Modified Engines Pre-Race = 2,600 lbs. / 56% Left Side – Cars may be scaled post-race for analysis
- Sportsman Modified "604" GM Crate Engine = 2,650 lbs. / 56% Left Side – Cars may be scaled post-race for analysis
- Cars may be required to scale at any time during the event. For this event, cars must be scaled following their final practice run and prior to the start of the feature. If any car fails to meet the required weight or scale during a mandated time they must start the next event in which they are scheduled to compete from the rear of the field.

Race of Champions Sportsman Modified "PID&C 72" Starting Lineup:

- | | |
|-------------------------------|-------------------------------|
| 1.) Qualifying Race (Redraw) | 2.) Qualifying Race (Redraw) |
| 3.) Qualifying Race (Redraw) | 4.) Qualifying Race (Redraw) |
| 5.) Qualifying Race (Redraw) | 6.) Qualifying Race (Redraw) |
| 7.) Qualifying Race (Redraw) | 8.) Qualifying Race (Redraw) |
| 9.) Qualifying Race (Redraw) | 10.) Qualifying Race (Redraw) |
| 11.) Qualifying Race (Redraw) | 12.) Qualifying Race (Redraw) |
| 13.) Qualifying Race | 14.) Qualifying Race |
| 15.) Qualifying Race | 16.) Qualifying Race |
| 17.) Qualifying Race | 18.) Qualifying Race |
| 19.) Qualifying Race | 20.) Qualifying Race |
| 21.) Qualifying Race | 22.) Qualifying Race |
| 23.) Qualifying Race | 24.) Qualifying Race |
| 25.) B-Main | 26.) B-Main |
| 27.) B-Main | 28.) B-Main |
| 29.) Provisional | 30.) Provisional |

PID&C 72 pay out: Note: For this event, pay off will be made via mail after the conclusion of the event.

1	\$3,072.72
2	\$1,250
3	\$1,000
4	\$900
5	\$800
6	\$700
7	\$600
8	\$500
9	\$400
10	\$375
11	\$350
12	\$325
13	\$300
14	\$200
15	\$200
16	\$200
17	\$200
18	\$200
19	\$200
20	\$200
21	\$200
22	\$200
23	\$200
24	\$200
25	\$200
26	\$200
27	\$200
28	\$200
29	\$200
30	\$200

2022 Race of Champions Sportsman Modified Series Schedule:

NP=Non-Point event / SP = Show Up Point event

**All events subject to change.*

DATE	TRACK	LAPS	POINT SCHEDULE	TIRE	WINNER
Friday, June 17	Spencer Speedway	35	100	1070	Andy Jankowiak
Saturday, July 9	Holland International Speedway	50	100	1070	Andy Jankowiak
Friday, August 5	Spencer Speedway	30	100	1070	Trevor Catalano
Saturday, August 6	Chemung Speedrome	51	100	1070	Postponed
Friday, August 19	Spencer Speedway	35	100	1070	Mike Leaty
Saturday, August 27	Holland International Speedway	50	100	1070	Shawn Nye
Friday, September 2	Spencer Speedway	41	100	1070	Trevor Catalano
Saturday, September 24	Lake Erie Speedway	54	150	1070	

2022 Decal and Contingency Award Programs

- More partners and awards may be added during the season.
- In order to be eligible for awards teams must display decal on left and right side of car in a visible location near the A-Pillar.
- No alterations may be made to decals and logos may not be reproduced or incorporated into wraps.
- If the initial winner of an award is not running the decal, all awards will shift to the next eligible competitor as specified above.



- **Mandatory for all competitors on top/forward corner of door (first, second, third and fourth decal):**

**RACE OF CHAMPIONS ASPHALT MODIFIED SERIES GENERAL TIRE POLICY
AND GENERAL TIRE TRANSPORT POLICY – EDITED FOR 2022**

- The Race of Champions Sportsman Modified Series may keep six (6) tires per team in their inventory, beginning Friday June 17, 2022 to any team. Race of Champions may choose to impound tires and is considering this option based on available storage.
- Only tires that are purchased at the event, on the day of the race may be introduced into competition and later transport / storage. Race events following the June 17, 2022 event at Spencer Speedway event will become one (1) tire events, unless announced otherwise. Please note that any “new” cars to the series may have the ability to purchase four (4) tires for an event based on availability.
- If inventory / storage is used - Tires must be signed in and out for inventory purposes.
- All wheels and unmounted tires must be labeled (inside unmounted tires) with car number and/or team name.
- Inventoried tires will not be released at any event until the tires are released from the sale of new tires.
- The Race of Champions will establish groups for tire purchase;
 - The groups will be determined based on a draw at the first event (the same draw that is used for establishing groups for qualifying). The draw must be complete before tire sales begin. If a team representative has not drawn prior to the time tire sales begin, they will be drawn for and place in the group in accordance with that draw.
 - For the remainder of the season, the tire groups will be established, divided into 4 groups.
 - Each group will have ten (10) minutes each to choose and measure tires before the next group is permitted to enter.
 - Only two (2) team members will be permitted in the tire impound sale area for any group at any time.
 - Teams will be required to sign out each tire upon purchase and registration of the tire for the event.
 - After each event, the groups will rotate order. The established tire selection order for the first event will be Group 1; followed by Group 2; followed by Group 3; followed by Group 4. The order for the second event will be Group 2; followed by Group 3; followed by Group 4; followed by Group 1.
 - The lineup from the first event will be maintained and as any new team(s) enter any race, the team will draw and be placed in a group, based on the initial draw at the first event and remain in that group for the remainder of the season.
- Beginning with event for the 2018 season, any tire that is written on in any manner will not be eligible for return and/or trade during the initial sizing process. Please consider using tape to mark your tires during the purchase, mounting and sizing process. Tires must not be written on.

*** TIRES MAY NOT BE RETURNED – THIS IS A HOOSIER RACING TIRE POLICY ***



Event Specific Rules / Qualifying and Race Procedures for the Race of Champions 40 (including Qualifying Races, B-Mains and the 40-lap Feature):

- Qualifying Races will consist of 8 green flag laps. Caution laps will not count.
- All original starts will be side-by-side off turn four at an area designated in the driver's meeting that will be the Start Point until the green flag is displayed.
- All restarts will be in the restart area designated in the driver's meeting.
- The front row must maintain the pace established by the pace car and will be instructed to do so on the one-way radio. If in the judgment of the Race of Champions Officials, the pace is not maintained a penalty and/or penalties may be issued.
- There will be no "Free Pass" candidate in Qualifying and/or Non-Qualifying Races.
- The races may be extended past their scheduled distance with a green-white-checker finish.
- The Race of Champions Super Stock race will be a 40-lap race. Cautions laps will not count. The race may be extended past the advertised distance in the event it needs to be concluded with a green-white-checker finish.
- The front row must maintain the pace established by the pace car and will be signaled to do so, on the one-way radio, if in the judgment of the Race of Champions Officials, the pace is not maintained a penalty and/or penalties may be issued.
- The leader is the control car on all starts and/or restarts. The leader of the race, including on the original start will have "choice" and be signaled on the one-way radio to choose the inside or outside lane prior to reaching the start/finish line. Only the leader has choice, all other competitors must hold their respective restart position in line behind the leader.
- All restarts until the completion of lap 30 will be double-file with lead lap cars to the front - lapped cars will drop to the inside under caution and rejoin the field beginning after the last car on the lead lap in their order of running on the race track at the time of the caution.
- After the completion of lap 30 all restarts will be single file with lead lap cars to the front until the completion of the event.
- You may not lose a lap under caution during this event.
- When the caution is displayed or yellow lights are illuminated, get into single-file order, you will be instructed over the one-way radio when it is time to go double-file and/or restart single file.
- If at any time the red flag is displayed and competitors are signaled to stop due to a red flag condition, cars must come to a complete stop. After the field is stopped and is under control, competitors will be instructed over the one-way radio and any vehicle not involved in the red flag incident that needs to pit for service, will be able to pull up to a designated location prior to being released to the pit area on the one-way radio. Any car that pits during the red flag period will be required to restart at the tail end of the field. If any car pits during a red flag situation without following the instruction over the one-way radio, a one (1)-lap penalty may be issued.
- The race may extend past the advertised 40-lap distance and could end with a green-white-checker finish. There may be multiple attempts at a green-white-checker finish, however, if the leader receives the white flag and the caution is displayed or the yellow lights are illuminated during the white flag lap the cars will be scored on the basis of their track position. **PASSING WILL NOT BE PERMITTED**, provided the cars maintain a reasonable speed considering the track conditions. Any cars that may be involved and/or the result of the caution will be scored in their respective position following the incident.
- **One-way radios are mandatory. The one-way frequency will be 454.000.**
- Cars breaking under green flag conditions may exit the race track at any pit entrance / exit.
- It is mandatory to have the following decals on both sides of the car (Race of Champions, VP Racing Fuels and Hoosier) and the driver must have display (Race of Champions, VP Racing Fuels and Hoosier) on their driver's uniform.
- To be eligible for other available contingencies you must run the decals. Included is a guided map for two available options to place decals on your vehicle.
- Immediately following the conclusion of the event, the first place car needs to go to the scale first, then we need second and third to the scales and to victory lane. Additional vehicles and/or competitors may be signaled to inspection over the one-way radio following the conclusion of the event.
- Race of Champions Officials reserve the right to alter the rules of this and/or any event, provided the competitors are given notice (in advance and/or over the one-way radio) due to any circumstance that require such a change or alteration.

Technical Inspection:

- Inspection at Lake Erie Speedway will take place at 10:15 am on Saturday September 24, 2022:

Inspection to be prepared for:

- Safety and General Inspection - Carburetor Inspection
- General Body Inspection - Pre-Race Engine Inspection
- Fuel Samples from Fuel Cell - Overall Inspection

***** Note:** There will be post-race inspection in the designated inspection area following the completion of Victory Lane Ceremonies.

Race Weights:

- Race of Champions Super Stock 3,200 lbs. / 56% Left Side – post race

Race of Champions Super Stock "40" Starting Line Up:

- | | |
|-------------------------------|-------------------------------|
| 1.) Qualifying Race (Redraw) | 2.) Qualifying Race (Redraw) |
| 3.) Qualifying Race (Redraw) | 4.) Qualifying Race (Redraw) |
| 5.) Qualifying Race (Redraw) | 6.) Qualifying Race (Redraw) |
| 7.) Qualifying Race (Redraw) | 8.) Qualifying Race (Redraw) |
| 9.) Qualifying Race (Redraw) | 10.) Qualifying Race (Redraw) |
| 11.) Qualifying Race (Redraw) | 12.) Qualifying Race (Redraw) |
| 17.) Qualifying Race | 18.) Qualifying Race |
| 19.) Qualifying Race | 20.) Qualifying Race |
| 21.) Qualifying Race | 22.) Qualifying Race |
| 23.) Provisional | 24.) Provisional |

Race of Champions Super Stock 40 Payout

Note: For this event, pay off will be made via mail after the conclusion of the event.

1	\$2,072.72
2	\$750
3	\$500
4	\$350
5	\$300
6	\$275
7	\$250
8	\$225
9	\$200
10	\$175
11	\$150
12	\$125
13	\$125
14	\$125
15	\$125
16	\$125
17	\$125
18	\$125
19	\$125
20	\$125
21	\$125
22	\$125
23	\$125
24	\$125

2022 Race of Champions Super Stock Series Schedule;

NP=Non-Point event / SP = Show Up Point event

*All events subject to change.

DATE	TRACK	LAPS	POINT SCHEDULE	TIRE	WINNER
Saturday, June 3	Spencer Speedway	25	100	1070	Tommy Barron
Friday, June 17	Spencer Speedway	25	100	1070	Tim Gullo
Frida, July 1	Spencer Speedway	25	100	1070	Matt Druar
Saturday, August 6	Chemung Speedrome	51	100	1070	Postponed
Friday, August 19	Spencer Speedway	25	100	1070	T.J. Cochrane
Saturday, August 27	Holland Internationals Speedway	48	100	1070	Tommy Krawczyk
Saturday, September 24	Lake Erie Speedway	40	150	1070	

2022 Decal and Contingency Award Programs

- More partners and awards may be added during the season.
- In order to be eligible for awards teams must display decal on left and right side of car in a visible location near the A-Pillar.
- No alterations may be made to decals and logos may not be reproduced or incorporated into wraps.
- If the initial winner of an award is not running the decal, all awards will shift to the next eligible competitor as specified above.

- **Mandatory for all competitors on top/forward corner of door (first, second, third and fourth decal):**

- No specific award for any of the mandatory below;



Decal Required for Program Participation.

RACE OF CHAMPIONS SUPER STOCK GENERAL TIRE POLICY

- The Race of Champions Super Stock Series will use the Hoosier 1070 tire exclusively.
- The Race of Champions will permit Race of Champions Super Stock Teams to begin the season with a maximum of (6) inventoried tires. Four (4) must be used on the car and two (2) as spares. Inventory tires will be kept by the barcode and must not be interchanged between teams without approval. The tire is referenced to a specific car number on an inventory sheet. **(Tires may be purchased anywhere only six (6) will be kept in inventory).**
- Only the Hoosier 1070 tire will be permitted for competition during the 2022 season.
- After the completion of the first race, each team will be permitted to introduce one (1) tire (new or used) at each event thereafter to their inventory, along with removal of one (1) tire, from that team's existing inventory.
- The "banking" of tires will not be permitted. In the event a competitor, who does not race regularly with the series, shows up at an event after the first event, the competitor will be required to purchase and compete on used tires from an inventory maintained by the Race of Champions. The competitor may race on used tires based on the inventory and introduce one new tire as per this policy.
- Teams will be responsible for their inventory of tires and must turn in an inventory sheet at each event prior to the qualifying race. Each inventory sheet will be tracked in a master spreadsheet. The tires must match the inventory sheet during inspection after any qualifying event and feature events. In the event that a team does not turn in an inventory sheet, that team may not be eligible to participate in the event.
- Used tire purchases will be permitted. The used inventory will be based on the tires in rotation and inventory used in the Sportsman Modified division. Tires will be purchased from the teams and checked out of the Sportsman Modified inventory and into the Race of Champions Super Stock inventory based on the car number for the purchasing team. Inventory will be kept utilizing the Race of Champions Super Stock Series Inventory and the Sportsman Modified Inventory.
- All wheels and unmounted tires must be labeled (inside unmounted tires) with car number and/or team name.
- In the event a tire loses both the inside and outside barcode, that tire must come out of all inventories and will not be permitted for use.

During the 2022 season, due to circumstances, Race of Champions management, will continue to accept Race of Champions Super Stock Series tires introduced from other outlets, however, the 6 tire inventory will remain in place.



2022 COMPETITION FORMAT

Event #4

Presque Isle Downs & Casino Race of Champions Weekend - Race of Champions "40"

Race of Champions Late Model Series

Lake Erie Speedway, North East, Pennsylvania

Saturday, September 24, 2022

Race of Champions Primary Contact;

Joe Skotnicki

716-880-0110

jskotnicki@rocmmodifiedseries.com

Lake Erie Speedway Primary Contacts;

A.J. Moore

814-725-3303

amoore@lakeeriespeedway.com

Event Schedule and General Daily Schedule:

Friday, September 23	9:00 am	Gates Open for Campers and Haulers
	12:00 pm (Noon)	Pit Sweep
	1:00 pm	Pit Gates Open, Practice for All Divisions
	4:00 pm until Dusk	Practice, Rotating by Division
Saturday, September 24	10:00 am	Pit Gates Open (Haulers Enter and Unload)
	10:15 am	Inspection and Draw for Groups Begin
	11:30 am	Race of Champions Late Model Series Virtual Driver's Meeting
	12:00 pm (Noon)	Practice Begins by Division (two rounds)
	2:30 pm	Qualifying Races (by Division) Race of Champions Late Model Series (8-laps)
	Followed by;	Race of Champions Late Model Series Feature (48-laps)
	9:30 pm	Pit Area Closed

"Race of Champions 40" Event Specific Rules;

***Note:** 2022 Race of Champions Rule Book - www.rocmmodifiedseries.com/downloads/get.aspx?i=709385

Note: If any competitor must introduce a backup car any time after qualifying, the competitor must relinquish any earned qualifying position and start from the rear of the field for any race in which the backup car is introduced into competition.

Tires; Only the "Hoosier" F45 (left side) and F45 (right side) will be permitted for this Race of Champions Late Model Series event. The tires used for Qualifying at the event must be introduced into the Competitor's specified inventory prior to practice, during pre-race inspection. The tires must be used on the car during the entire event (practice, the qualifying race and the feature). There will be no tire changes permitted during the event unless the tire is flat or damaged severely as determined by Race of Champions Officials. In the event of a flat and/or damaged tire, the tire must be presented to an official and removed from the Competitor's specified inventory for any tire change to occur without penalty. Any tires that are changed that are not in the Competitor's specified inventory will not be approved and will be subject to penalty.

For all events the following will be the maximum RPM permitted; Any Ford engine 6,300 RPM. Any Chevrolet engine 6,500 RPM.

An AMB Transponder will be REQUIRED for ALL Race of Champions Late Model Series events, beginning July 29, 2017.

Fuel: Only VP Racing Fuels (110/Purple) will be permitted for competition.

Series and Contingency Decals: Will be verified and must be present for payout of award. Race of Champions, Hoosier and VP Racing Fuels are mandatory. In addition, other contingency decals specific to this event may be mandatory. Other contingency decals are optional but payout is not guaranteed unless decal and product are present.

Race of Champions Late Model Series Qualifying Procedure "Race of Champions 40" at Lake Erie Speedway:

- **24** Car Field maximum.
- The initial draw will be used to determine the line-up for the Qualifying Races.
- The feature will be lined up based on "heads up qualifying" after the qualifying races.
- **The race will be on the 150-point schedule.**

Event Specific Rules / Qualifying and Race Procedures for the "Race of Champions 40" (including Qualifying Races, B-Mains and the 40-lap Feature):

- Qualifying Races will consist of 8 green flag laps. Caution laps will not count.
- All original starts will be side-by-side off turn four at an area designated in the driver's meeting that will be the Start Point until the green flag is displayed.
- All restarts will be in the restart area designated in the driver's meeting.
- The front row must maintain the pace established by the pace car and will be instructed to do so on the one-way and race channel radio. If in the judgment of the Race of Champions Officials, the pace is not maintained a penalty and/or penalties may be issued.
- The races may be extended past their scheduled distance with a green-white-checker finish.
- The "Race of Champions 40" will be a 40-lap race. Cautions laps will not count. The race may be extended past the advertised distance in the event it needs to be concluded with a green-white-checker finish.
- The front row must maintain the pace established by the pace car and will be signaled to do so, on the one-way radio, if in the judgment of the Race of Champions Officials, the pace is not maintained a penalty and/or penalties may be issued.
- The leader is the control car on all starts and/or restarts. The leader of the race, including on the original start will have "choice" and be signaled on the one-way radio to choose the inside or outside lane prior to reaching the start/finish line. Only the leader has choice, all other competitors must hold their respective restart position in line behind the leader.
- All restarts will be double-file with lead lap cars to the front - lapped cars will drop to the inside under caution and rejoin the field beginning after the last car on the lead lap in their order of running on the race track at the time of the caution.
- You may not lose a lap under caution during this event.
- When the caution is displayed or yellow lights are illuminated, get into single-file order, you will be instructed over the one-way radio when it is time to go double-file and/or restart single file.
- If at any time the red flag is displayed and competitors are signaled to stop due to a red flag condition, cars must come to a complete stop. After the field is stopped and is under control, competitors will be instructed over the one-way radio and any vehicle not involved in the red flag incident that needs to pit for service, will be able to pull up to a designated location prior to being released to the pit area on the one-way radio. Any car that pits during the red flag period will be required to restart at the tail end of the field. If any car pits during a red flag situation without following the instruction over the one-way radio, a one (1)-lap penalty may be issued.
- The race may extend past the advertised 50-lap distance and could end with a green-white-checker finish. There may be multiple attempts at a green-white-checker finish, however, if the leader receives the white flag and the caution is displayed or the yellow lights are illuminated during the white flag lap the cars will be scored on the basis of their track position. PASSING WILL NOT BE PERMITTED, provided the cars maintain a reasonable speed considering the track conditions. Any cars that may be involved and/or the result of the caution will be scored in their respective position following the incident.
- **One-way radios are mandatory. The one-way frequency will be 454.000. Two-way radios will not be permitted.**
- Cars breaking under green flag conditions may exit the race track at any pit entrance / exit that may be accessed without bringing out the caution.
- It is mandatory to have the following decals on both sides of the car (Race of Champions, VP Racing Fuels and Hoosier) and the driver must have display (Race of Champions, VP Racing Fuels and Hoosier) on their driver's uniform.
- To be eligible for other available contingencies you must run the decals. Included is a guided map for two available options to place decals on your vehicle.
- Immediately following the conclusion of the event, the first place car needs to go to the scale first, then we need second and third to the scales and to victory lane. Additional vehicles and/or competitors may be signaled to inspection over the one-way radio following the conclusion of the event.
- Race of Champions Officials reserve the right to alter the rules of this and/or any event, provided the competitors are given notice (in advance and/or over the one-way radio) due to any circumstance that require such a change or alteration.

Technical Inspection:

- Inspection at Lake Erie Speedway will take place at 10:15 am on Saturday, September 24, 2022:

Inspection to be prepared for:

- Safety and General Inspection - Carburetor Inspection
- General Body Inspection - Pre-Race Engine Inspection
- Fuel Samples from Fuel Cell - Overall Inspection

***** Note:** There will be post-race inspection in the designated inspection area following the completion of Victory Lane Ceremonies.

Race Weights:

Any "Gen 6" Body will be permitted.

Any GM / Chevrolet Performance 602 Crate Engine (unaltered as per the GM / Chevrolet 602 Performance Manual) must weigh a minimum 2,650lbs with a total 59% left side weight.

Any GM / Chevrolet Performance 604 Crate Engine (unaltered as per the GM / Chevrolet 604 Performance Manual) must weigh a minimum 2,700lbs with a total 59% left side weight.

The CRA / JEGS Ford Engine (unaltered as per the Ford Manual) must weigh a minimum 2,750lbs with a total 58% left side weight

Any GM / Chevrolet Performance 604 Crate Engine with an altered cam shaft must weigh a minimum 2,750lbs with a total 58% left side weight.

Any magnetic steel 23 degree cylinder head "built" engine must weigh a minimum 2,900 lbs with a total 56% left side weight.

Any "Open" GM / Chevrolet Performance 604 Crate Engine with an altered cam shaft must weigh a minimum 2,7 lbs with a total 58% left side weight.

Race of Champions "40" Starting Lineup:

- | | |
|-------------------------------|-------------------------------|
| 1.) Qualifying Race (Redraw) | 2.) Qualifying Race (Redraw) |
| 3.) Qualifying Race (Redraw) | 4.) Qualifying Race (Redraw) |
| 5.) Qualifying Race (Redraw) | 6.) Qualifying Race (Redraw) |
| 7.) Qualifying Race (Redraw) | 8.) Qualifying Race (Redraw) |
| 9.) Qualifying Race (Redraw) | 10.) Qualifying Race (Redraw) |
| 11.) Qualifying Race (Redraw) | 12.) Qualifying Race (Redraw) |
| 13.) Qualifying Race | 14.) Qualifying Race |
| 15.) Qualifying Race | 16.) Qualifying Race |
| 17.) Qualifying Race | 18.) Qualifying Race |
| 19.) Qualifying Race | 20.) Qualifying Race |
| 21.) Qualifying Race (B-Main) | 22.) Qualifying Race (B-Main) |
| 23.) Provisional | 24.) Provisional |

Purse: "Race of Champions 40": Payoff will be made via US Mail.

1	\$2027.72
2	\$750
3	\$700
4	\$650
5	\$600
6	\$550
7	\$525
8	\$500
9	\$475
10	\$450
11	\$425
12	\$400
13	\$350
14	\$300
15	\$300

2022 Race of Champions Late Model Series Schedule;

NP=Non-Point event / SP = Show Up Point event

**All events subject to change.*

Friday, June 17	Spencer Speedway	25	100	F45	Eldon King, III
Saturday, July 9	Holland International Speedway	25	100	F45	Sam Fullone
Friday, August 5	Spencer Speedway	25	100	F45	Canceled
Saturday, August 20	Chemung Speedrome	30	100	F45	Eldon King III
Saturday, September 24	Lake Erie Speedway	40	150	F45	

2022 Decal and Contingency Award Programs

- * More partners and awards may be added during the season.
- * In order to be eligible for awards teams must display decal on left and right side of car in a visible location near the A-Pillar.
- * No alterations may be made to decals and logos may not be reproduced or incorporated into wraps.
- * If the initial winner of an award is not running the decal, all awards will shift to the next eligible competitor as specified

above. **Mandatory for all competitors on top/forward corner of door (first, second, third and fourth decal):**

- No specific award for any

**Decal Required for Program Participation**



2022 COMPETITION FORMAT
Presque Isle Downs & Casino Race of Champions Weekend
Race of Champions "30"
Race of Champions Street Stock Series
Lake Erie Speedway, North East, Pennsylvania
Sunday, September 25, 2022

Race of Champions Primary Contact;

Joe Skotnicki

716-880-0110

jskotnicki@rocmodifiedseries.com

Lake Erie Speedway Primary Contacts;

A.J. Moore

814-725-3303

amoore@lakeeriespeedway.com

Event Schedule and General Daily Schedule:

Friday, September 23	9:00 am	Gates Open for Campers and Haulers
	12:00 pm (Noon)	Pit Sweep
	1:00 pm	Pit Gates Open, Practice for All Divisions
	4:00 pm until Dusk	Practice, Rotating by Division
Sunday, September 25	9:00 am	Gates Open for Campers and Haulers
	9:00 am	Pit Gates Open
	9:15 am	Inspection and Draw Open for All Divisions
	10:45 am	Driver's Meeting Virtual
	11:00 am	Practice, Rotating by Division
	1:15 pm	Opening Ceremonies
	Followed by;	Qualifying Races by Division:
		Race of Champions Street Stock Series (8-laps)
	Followed by;	Race of Champions Street Stock Series (30-laps)
	6:30 pm	Pit Area Closed

Race of Champions "30" Event Specific Rules;

***Note:** All 2022 Race of Champions Street Stock Series Rules Apply, with the exception of the tire rule. Only 2019 tire and wheel rules will be permitted for the Street Stock division. (7"-inch wheels – TCT Tires – Hoosier and/or American Racer Casing will be permitted). - www.rocmodifiedseries.com/downloads/get.aspx?i=695255

Race of Champions "30" Qualifying Procedure at Lake Erie Speedway:

- 24 Car Field maximum.
- The initial draw will be used to determine the line-up for the Qualifying Races.
- The feature will be lined up based on "heads up qualifying" after the qualifying races, including a redraw, based on car count involving the top qualifying cars in the qualifying races.

Event Specific Rules / Qualifying and Race Procedures for the Race of Champions "30" (including Qualifying Races, B-Mains and the 30-lap Feature):

- Qualifying Races will consist of 8 green flag laps. Caution laps will not count.
- All original starts will be side-by-side off turn four at an area designated in the driver's meeting that will be the Start Point until the green flag is displayed.
- All restarts will be in the restart area designated in the driver's meeting.
- The front row must maintain the pace established by the pace car and will be instructed to do so on the one-way and race channel radio. If in the judgment of the Race of Champions Officials, the pace is not maintained a penalty and/or penalties may be issued.
- The races may be extended past their scheduled distance with a green-white-checker finish.
- The Race of Champions "30" will be a 30-lap race. Cautions laps will not count. The race may be extended past the advertised distance in the event it needs to be concluded with a green-white-checker finish.
- The front row must maintain the pace established by the pace car and will be signaled to do so, on the one-way radio, if in the judgment of the Race of Champions Officials, the pace is not maintained a penalty and/or penalties may be issued.
- The leader is the control car on all starts and/or restarts. The leader of the race, including on the original start will have "choice" and be signaled on the one-way radio to choose the inside or outside lane prior to reaching the start/finish line. Only the leader has choice, all other competitors must hold their respective restart position in line behind the leader.
- All restarts will be double-file with lead lap cars to the front - lapped cars will drop to the inside under caution and rejoin the field beginning after the last car on the lead lap in their order of running on the race track at the time of the caution.
- You may not lose a lap under caution during this event.
- When the caution is displayed or yellow lights are illuminated, get into single-file order, you will be instructed over the one-way radio when it is time to go double-file and/or restart single file.

Event Specific Rules / Qualifying and Race Procedures for the Race of Champions "30" (including Qualifying Races, B-Mains and the 30-lap Feature):

- If at any time the red flag is displayed and competitors are signaled to stop due to a red flag condition, cars must come to a complete stop. After the field is stopped and is under control, competitors will be instructed over the one-way radio and any vehicle not involved in the red flag incident that needs to pit for service, will be able to pull up to a designated location prior to being released to the pit area on the one-way radio. Any car that pits during the red flag period will be required to restart at the tail end of the field. If any car pits during a red flag situation without following the instruction over the one-way radio, a one (1)-lap penalty may be issued.
- The race may extend past the advertised 30-lap distance and could end with a green-white-checker finish. There may be multiple attempts at a green-white-checker finish, however, if the leader receives the white flag and the caution is displayed or the yellow lights are illuminated during the white flag lap the cars will be scored on the basis of their track position. PASSING WILL NOT BE PERMITTED, provided the cars maintain a reasonable speed considering the track conditions. Any cars that may be involved and/or the result of the caution will be scored in their respective position following the incident.
- **One-way radios are mandatory. The one-way frequency will be 454.000. Two-way radios will not be permitted.**
- Cars breaking under green flag conditions may exit the race track at any pit entrance / exit that may be accessed without bringing out the caution.
- It is mandatory to have the following decals on both sides of the car (Race of Champions, VP Racing Fuels and Hoosier) and the driver must have display (Race of Champions, VP Racing Fuels and Hoosier) on their driver's uniform.
- To be eligible for other available contingencies you must run the decals. Included is a guided map for two available options to place decals on your vehicle.
- Immediately following the conclusion of the event, the first place car needs to go to the scale first, then we need second and third to the scales and to victory lane. Additional vehicles and/or competitors may be signaled to inspection over the one-way radio following the conclusion of the event
- Race of Champions Officials reserve the right to alter the rules of this and/or any event, provided the competitors are given notice (in advance and/or over the one-way radio) due to any circumstance that require such a change or alteration.

Technical Inspection:

- Inspection at Lake Erie Speedway will take place at 9:15 am on Sunday, September 25, 2022.

Inspection to be prepared for:

- Safety and General Inspection - Carburetor Inspection
- General Body Inspection - Pre-Race Engine Inspection
- Fuel Samples from Fuel Cell - Overall Inspection

***** Note:** There will be post-race inspection in the designated inspection area following the completion of Victory Lane Ceremonies.

Race of Champions "30" Starting Lineup:

- | | |
|-------------------------------|-------------------------------|
| 1.) Qualifying Race (Redraw) | 2.) Qualifying Race (Redraw) |
| 3.) Qualifying Race (Redraw) | 4.) Qualifying Race (Redraw) |
| 5.) Qualifying Race (Redraw) | 6.) Qualifying Race (Redraw) |
| 7.) Qualifying Race (Redraw) | 8.) Qualifying Race (Redraw) |
| 9.) Qualifying Race (Redraw) | 10.) Qualifying Race (Redraw) |
| 11.) Qualifying Race (Redraw) | 12.) Qualifying Race (Redraw) |
| 13.) Qualifying Race | 14.) Qualifying Race |
| 15.) Qualifying Race | 16.) Qualifying Race |
| 17.) Qualifying Race | 18.) Qualifying Race |
| 19.) Qualifying Race | 20.) Qualifying Race |
| 21.) Qualifying Race | 22.) Qualifying Race |
| 23.) Qualifying Race | 24.) Qualifying Race |

Street Stock 30 Payout

Note: For this event, pay off will be made via mail after the conclusion of event.

1	\$572.72
2	\$350
3	\$300
4	\$275
5	\$250
6	\$225
7	\$200
8	\$175
9	\$150
10	\$125
11	\$100
12	\$100
13	\$100
14	\$100
15	\$100
16	\$100
17	\$100
18	\$100
19	\$100
20	\$100
21	\$100
22	\$100
23	\$100
24	\$100

2022 Race of Champions Street Series Schedule;

NP=Non-Point event / SP = Show Up Point event

**All events subject to change.*

Saturday, July 9	Holland International Speedway	25	100	Tim Welshans
Saturday, July 30	Holland International Speedway	37	100	Brian Hoffman
Sunday, September 25	Lake Erie Speedway	40	150	



2022 COMPETITION FORMAT

Presque Isle Downs & Casino Race of Champions Weekend

Race of Champions FOAR Score Four Cylinder Dash Series – Dash Series Triple Challenge – Fred Rounds Classic

Race of Champions FOAR Score Four Cylinder Dash Series

Lake Erie Speedway, North East, Pennsylvania

Friday, September 23; Saturday, September 24 and Sunday September 25, 2021

Race of Champions Primary Contact;

Joe Skotnicki

716-880-0110

jskotnicki@rocmodifiedseries.com

Lake Erie Speedway Primary Contacts;

A.J. Moore

814-725-3303

amoore@lakeeriespeedway.com

Event Schedule and General Daily Schedule:

Friday, September 23	10:00 am	Gates Open for Campers and Haulers
	1:00 pm	Pit Sweep
	3:00 pm	Pit Gates Open, Practice for All Divisions
	4:00 pm until Dusk	Practice, Rotating by Division
	5:15 pm	Four Cylinder Dash Series
	6:15 pm Approx.	Four Cylinder Dash Series Qualifying Races (6-laps)
	Followed by;	B-Main (if necessary)
	Followed by'	Dash Series Triple Challenge Race #1 (20-laps) – (Top 16 transfer to Saturday)
Saturday, September 24	10:00 am	Pit Gates Open (Haulers Enter and Unload)
	10:15 am	Inspection and Draw for Groups Begin
	12:00 pm (Noon)	Practice Begins
	1:00 pm	Four Cylinder B-Main Qualifying Races (8-laps) (2 B-Mains to establish field) (Winner will draw invert 10, 12, 14 or 16)
	Followed by;	Race of Champions Four Cylinder Championship (25-laps)
Sunday, September 25	9:00 am	Gates Open for Campers and Haulers
	9:00 am	Pit Gates Open
	9:15 am	Inspection and Draw Open for All Divisions
	10:45 am	Driver's Meeting Virtual
	11:00 am	Practice, Rotating by Division
	1:15 pm	Opening Ceremonies
	Followed by;	Qualifying Races by Division:
		Race of Champions Four Cylinder Dash Series (6-laps)
	Followed by;	Race of Champions Four Cylinder Dash Series B-Main (8-laps)
	Followed by;	Butch Palmer Classic 32 (32-laps)
	6:30 pm	Pit Area Closed

Race of Champions Four Cylinder Dash Series Triple Challenge Event Specific Rules;

***Note: Track Rules apply. The track weight will be used. Declaration of home track/rules package will be based on individual track championship point standings. The track in which a competitor has the most points will be that competitors declared home track/rules package. The car, as presented, must meet the rules specified for that of the track that is declared as the competitors home track. If using racing tires in competition, must run same tire on all four (4) corners and add 100 lbs. Track, engine size and weight must be declared, written in duct tape and displayed on hood is required. - www.rocmodifiedseries.com/downloads/get.aspx?i=699379**

Race of Champions Four Cylinder Dash Series Triple Challenge Qualifying Procedure at Lake Erie Speedway:

Friday – September 23, 2022;

- 24 Car Field maximum.
- The initial draw will be used to determine the line-up for the Qualifying Races.
- The feature will be lined up based on "heads up qualifying" after the qualifying races, including a redraw, based on car count involving the top qualifying cars in the qualifying races.

Saturday – September 24, 2022;

- **24** Car Field maximum.
- Top-16 locked in from the feature on September 25, 2020. (An invert will be drawn by the winner – 10, 12, 14 or 16).
- B-Main(s) will fill the remainder of the field. Cars competing in the feature on September 25, 2020 will start in front of any new entries in order of feature finish. All new entries will draw for starting position behind those cars.
- The feature will be lined up based on “heads up qualifying” after the qualifying races, including a redraw, based on car count involving the top qualifying cars in the qualifying races.

Sunday – September 25, 2022;

- **32** Car Field maximum.
- The initial draw will be used to determine the line-up for the Qualifying Races.
- The feature will be lined up based on “heads up qualifying” after the qualifying races, including a redraw, based on car count involving the top qualifying cars in the qualifying races.

Event Specific Rules / Qualifying and Race Procedures for the Race of Champions Four Cylinder Championship “20” (including Qualifying Races, B-Mains and all features):

- Qualifying Races will consist of 8 green flag laps. Caution laps will not count.
- All original starts will be side-by-side off turn four at an area designated in the driver’s meeting that will be the Start Point until the green flag is displayed.
- All restarts will be in the restart area designated in the driver’s meeting.
- The front row must maintain the pace established by the pace car and will be instructed to do so on the one-way and race channel radio. If in the judgment of the Race of Champions Officials, the pace is not maintained a penalty and/or penalties may be issued.
- The races may be extended past their scheduled distance with a green-white-checker finish.
- The Race of Champions “20” will be a 20-lap race (25-lap or 30-lap feature as well). Cautions laps will not count. The race may be extended past the advertised distance in the event it needs to be concluded with a green-white-checker finish.
- The front row must maintain the pace established by the pace car and will be signaled to do so, on the one-way radio, if in the judgment of the Race of Champions Officials, the pace is not maintained a penalty and/or penalties may be issued.
- The leader is the control car on all starts and/or restarts. The leader of the race, including on the original start will have “choice” and be signaled on the one-way radio to choose the inside or outside lane prior to reaching the start/finish line. Only the leader has choice, all other competitors must hold their respective restart position in line behind the leader.
- All restarts will be double-file with lead lap cars to the front - lapped cars will drop to the inside under caution and rejoin the field beginning after the last car on the lead lap in their order of running on the race track at the time of the caution.
- You may not lose a lap under caution during this event.
- When the caution is displayed or yellow lights are illuminated, get into single-file order, you will be instructed over the one-way radio when it is time to go double-file and/or restart single file.
- If at any time the red flag is displayed and competitors are signaled to stop due to a red flag condition, cars must come to a complete stop. After the field is stopped and is under control, competitors will be instructed over the one-way radio and any vehicle not involved in the red flag incident that needs to pit for service, will be able to pull up to a designated location prior to being released to the pit area on the one-way radio. Any car that pits during the red flag period will be required to restart at the tail end of the field. If any car pits during a red flag situation without following the instruction over the one-way radio, a one (1)-lap penalty may be issued.
- The race may extend past the advertised 20-lap distance and could end with a green-white-checker finish. There may be multiple attempts at a green-white-checker finish, however, if the leader receives the white flag and the caution is displayed or the yellow lights are illuminated during the white flag lap the cars will be scored on the basis of their track position. **PASSING WILL NOT BE PERMITTED**, provided the cars maintain a reasonable speed considering the track conditions. Any cars that may be involved and/or the result of the caution will be scored in their respective position following the incident.
- **One-way radios are mandatory. The one-way frequency will be 454.000. Two-way radios will not be permitted.**
- Cars breaking under green flag conditions may exit the race track at any pit entrance / exit that may be accessed without bringing out the caution.
- It is mandatory to have the following decals on both sides of the car (Race of Champions, VP Racing Fuels and Hoosier) and the driver must have display (Race of Champions, VP Racing Fuels and Hoosier) on their driver’s uniform.
- To be eligible for other available contingencies you must run the decals. Included is a guided map for two available options to place decals on your vehicle.
- Immediately following the conclusion of the event, the first place car needs to go to the scale first, then we need second and third to the scales and to victory lane. Additional vehicles and/or competitors may be signaled to inspection over the one-way radio following the conclusion of the event.
- Race of Champions Officials reserve the right to alter the rules of this and/or any event, provided the competitors are given notice (in advance and/or over the one-way radio) due to any circumstance that require such a change or alteration.

Technical Inspection:

- Inspection at Lake Erie Speedway will take place at 4:15 pm on Friday, September 24, 2021; 10:15 am on Saturday, September 25, 2021 and at 9:15 am on Sunday, September 26, 2021.

Inspection to be prepared for:

- Safety and General Inspection - Carburetor Inspection
- General Body Inspection - Pre-Race Engine Inspection
- Fuel Samples from Fuel Cell - Overall Inspection

***** Note:** There will be post-race inspection in the designated inspection area following the completion of Victory Lane Ceremonies.

Race of Champions Four Cylinder Championship "20" & "25" Starting Lineup:

- | | |
|-------------------------------|-------------------------------|
| 1.) Qualifying Race (Redraw) | 2.) Qualifying Race (Redraw) |
| 3.) Qualifying Race (Redraw) | 4.) Qualifying Race (Redraw) |
| 5.) Qualifying Race (Redraw) | 6.) Qualifying Race (Redraw) |
| 7.) Qualifying Race (Redraw) | 8.) Qualifying Race (Redraw) |
| 9.) Qualifying Race (Redraw) | 10.) Qualifying Race (Redraw) |
| 11.) Qualifying Race (Redraw) | 12.) Qualifying Race (Redraw) |
| 13.) Qualifying Race | 14.) Qualifying Race |
| 15.) Qualifying Race | 16.) Qualifying Race |
| 17.) Qualifying Race | 18.) Qualifying Race |
| 19.) Qualifying Race | 20.) Qualifying Race |
| 21.) Qualifying Race | 22.) Qualifying Race |
| 23.) Qualifying Race | 24.) Qualifying Race |

Payoff for Fred Rounds Classic, Sunday, September 25, 2022;

1	\$572.72
2	\$150
3	\$125
4	\$100
5	\$90
6	\$80
7	\$70
8	\$60
9	\$50
10	\$50
11	\$40
12	\$40
13	\$40
14	\$40
15	\$40
16	\$40
17	\$40
18	\$40
19	\$40
20	\$40
21	\$40
22	\$40
23	\$40
24	\$40

Four Cylinder Dash Series Triple Challenge (Friday 9/23 & Saturday 9/24)

Note: For this event, pay off will be made via mail after the conclusion of event.

1	\$372.72
2	\$150
3	\$125
4	\$100
5	\$90
6	\$80
7	\$70
8	\$60
9	\$50
10	\$50
11	\$50
12	\$50
13	\$50
14	\$50
15	\$50
16	\$50
17	\$50
18	\$50
19	\$50
20	\$50
21	\$50
22	\$50
23	\$50
24	\$50

2022 Race of Champions FOAR Score Dash Four Cylinder Series Schedule;

NP=Non-Point event / SP = Show Up Point event

**All events subject to change.*

DATE	TRACK	LAPS	POINT SCHEDULE	WINNER
Friday, July 1	Spencer Speedway	20	100	Andrew Lewis, Jr.
Saturday, July 9	Holland International Speedway	25	100	Bob Palmer
Saturday, July 30	Holland International Speedway	25	100	Andrew Lewis, Jr.
Saturday, August 6	Chemung Speedrome	25	100	Postponed
Saturday, August 20	Chemung Speedrome	25	100	Nick Robinson
Saturday, August 27	Holland International Speedway	32	100	
Friday, September 23	Lake Erie Speedway	20	100	
Saturday, September 24	Lake Erie Speedway	25	100	
Saturday, September 25	Lake Erie Speedway	30	150	
Saturday, October 22	Painesville Speedway	TBD	150	

2022 Decal and Contingency Award Programs

- * More partners and awards may be added during the season.
- * In order to be eligible for awards teams must display decal on left and right side of car in a visible location near the A-Pillar.
- * No alterations may be made to decals and logos may not be reproduced or incorporated into wraps.
- * If the initial winner of an award is not running the decal, all awards will shift to the next eligible competitor as specified

above. **Mandatory for all competitors on top/forward corner of door (first, second, third and fourth decal):**

- No specific award for any



Decal Required for Program Participation.



2021 COMPETITION FORMAT

Event #7

Presque Isle Downs & Casino Race of Champions Weekend

Race of Champions "Rocket Performance" 602 Sportsman Modified Series "15"

Race of Champions "Rocket Performance" 602 Sportsman Modified Series

Lake Erie Speedway, North East, Pennsylvania

Saturday, September 24, 2022

Race of Champions Primary Contact;

Joe Skotnicki

716-880-0110

jskotnicki@rocmodifiedseries.com

Lake Erie Speedway Primary Contacts;

A.J. Moore

814-725-3303

amoore@lakeerispeedway.com

Event Schedule and General Daily Schedule:

Friday, September 23	9:00 am	Gates Open for Campers and Haulers
	12:00 pm (Noon)	Pit Sweep
	1:00 pm	Pit Gates Open, Practice for All Divisions
	4:00 pm until Dusk	Practice, Rotating by Division
Saturday, September 24	10:00 am	Pit Gates Open (Haulers Enter and Unload)
	10:15 am	Inspection and Draw for Groups Begin
	11:30 pm	Race of Champions 602 Sportsman Drivers Meeting
	12:00 pm (Noon)	Practice Begins by Division (two rounds)
	2:30 pm	Qualifying Races (by Division) Race of Champions 602 Sportsman Modified Series (6-laps)
	Followed by;	Race of Champions 602 Sportsman Modified Series Feature (15-laps)
	9:30 pm	Pit Area Closed

Race of Champions 15 Event Specific Rules;

***Note:** 2022 Race of Champions Rule Book - <http://www.rocmodifiedseries.com/#!membershiprules/c9qb> (Engine Package and Weight Displayed on Hood – written on duct tape is acceptable).

Tires; All tires for this event must be purchased at Lake Erie Speedway on the day of this event. Only the "Hoosier" 1070 will be permitted for this Race of Champions event. In an effort to maintain and prevent tire alteration, all tires must be purchased for competition at this event. If any tire is required to be analyzed, the wheel and tire will be impounded, the payout will be held for the position in which the car finished with the impounded tire. In the event that tire is deemed altered, the payout for that position will be divided equally and awarded to all finishing positions for the event (30 starting positions) minus the cost of the tire analysis. Finishing positions in the race will not be altered based on a penalty. Only Race of Champions Officials will determine if a tire requires analysis. Tires may not be protested. Any competitor found with tires that have been altered will be suspended for a period of 365-days from any Race of Champions event, including, but not limited to the 72nd Annual Race of Champions.

Note: If any competitor must introduce a backup car any time after qualifying, the competitor must relinquish any earned qualifying position and start from the rear of the field for any race in which the backup car is introduced into competition.

Fuel: Only VP Racing Fuel VP110 (110/Purple) or standard pump gasoline will be permitted for competition.

Series and Contingency Decals: Will be verified and must be present for payout of award. Race of Champions, Hoosier and VP Racing Fuels are mandatory. In addition, other contingency decals specific to this event may be mandatory. Other contingency decals are optional but payout is not guaranteed unless decal and product are present.

Transponders: If you require a rental transponder and/or need a transponder, the Race of Champions only has a limited amount available for rental. Please make arrangements and/or contact the Race of Champions.

Race of Champions Asphalt Modified Qualifying Procedure Race of Champions Rocket Performance "602" Sportsman Modified Series – Race of Champions 15 at Lake Erie Speedway;

- **26 -Car Field maximum.**
- **26 Car Field maximum.** (Two (2) Provisional positions available to the Top-15 in the final 2020 championship standings.) Provisional starting positions will be awarded to the first (two) 2 drivers in the final 2020 Race of Champions Sportsman Modified Series Top-15, who have failed to qualify for the feature race provided the competitor that is eligible for the Provisional, practices and makes an attempt to qualify through the qualifying races.
- Qualifying Race Starting Position will be determined the overall fastest times posted in the final hot lap session. The times will be reflected in the lineup for each group. The fastest overall qualifier in each group will draw a pill (0, 2 or 4) for a qualifying race invert.. In the event that transponders are not used, the qualifying race lineups will be based on the draw.

Event Specific Rules / Qualifying and Race Procedures for Race of Champions 15 (including Time Trials, Qualifying Races, B-Mains and the 15-lap Feature):

- The Timed Hot Lap Session will be cumulative in the final hot lap session with the best recorded lap time being the time of record. (No group qualifying).
- Qualifying Races will consist of 6 green flag laps. Caution laps will not count.
- All original starts will be side-by-side off turn four at an area designated in the driver's meeting that will be the Start Point until the green flag is displayed.
- All restarts will be in the restart area designated in the driver's meeting.
- The front row must maintain the pace established by the pace car and will be instructed to do so on the one-way and race channel radio. If in the judgment of the Race of Champions Officials, the pace is not maintained a penalty and/or penalties may be issued.
- There will be no "Free Pass" candidate in Qualifying and/or Non-Qualifying Races.
- The races may be extended past their scheduled distance with a green-white-checker finish.
- The Race of Champions "15" will be a 15-lap race. Cautions laps will not count. The race may be extended past the advertised distance in the event it needs to be concluded with a green-white-checker finish.
- The front row must maintain the pace established by the pace car and will be signaled to do so, on the one-way radio, if in the judgment of the Race of Champions Officials, the pace is not maintained a penalty and/or penalties may be issued.
- The leader is the control car on all starts and/or restarts. The leader of the race, including on the original start will have "choice" and be signaled on the one-way radio to choose the inside or outside lane prior to reaching the start/finish line. Only the leader has choice, all other competitors must hold their respective restart position in line behind the leader.
- All restarts until the completion of lap 40 will be double-file with lead lap cars to the front - lapped cars will drop to the inside under caution and rejoin the field beginning after the last car on the lead lap in their order of running on the race track at the time of the caution.
- After the completion of lap 50 all restarts will be single file with lead lap cars to the front until the completion of the event.
- You may not lose a lap under caution during this event.
- When the caution is displayed or yellow lights are illuminated, get into single-file order, you will be instructed over the one-way radio when it is time to go double-file and/or restart single file.
- If at any time the red flag is displayed and competitors are signaled to stop due to a red flag condition, cars must come to a complete stop. After the field is stopped and is under control, competitors will be instructed over the one-way radio and any vehicle not involved in the red flag incident that needs to pit for service, will be able to pull up to a designated location prior to being released to the pit area on the one-way radio. Any car that pits during the red flag period will be required to restart at the tail end of the field. If any car pits during a red flag situation without following the instruction over the one-way radio, a one (1)-lap penalty may be issued.
- The race may extend past the advertised 75-lap distance and could end with a green-white-checker finish. There may be multiple attempts at a green-white-checker finish, however, if the leader receives the white flag and the caution is displayed or the yellow lights are illuminated during the white flag lap the cars will be scored on the basis of their track position. PASSING WILL NOT BE PERMITTED, provided the cars maintain a reasonable speed considering the track conditions. Any cars that may be involved and/or the result of the caution will be scored in their respective position following the incident.
- **One-way radios are mandatory. The one-way frequency will be 454.000. A two-way radio system may be used provided the spotter and/or crew chief monitor the one-way and/or race channel frequency. The race channel frequency will be announced at the event.**
- Cars breaking under green flag conditions may exit the race track at any pit entrance / exit.
- It is mandatory to have the following decals on both sides of the car (Race of Champions, , VP Racing Fuels and Hoosier) and the driver must have display (Race of Champions, VP Racing Fuels and Hoosier) on their driver's uniform.
- To be eligible for other available contingencies you must run the decals. Included is a guided map for two available options to place decals on your vehicle.
- Immediately following the conclusion of the event, the first place car needs to go to the scale first, then we need second and third to the scales and to victory lane. Additional vehicles and/or competitors may be signaled to inspection over the one-way radio following the conclusion of the event.
- Race of Champions Officials reserve the right to alter the rules of this and/or any event, provided the competitors are given notice (in advance and/or over the one-way radio) due to any circumstance that require such a change or alteration.

Technical Inspection:

- Inspection at Spencer Speedway will take place at 10:15 am on Saturday, September 24, 2022

Inspection to be prepared for:

- Safety and General Inspection - Carburetor Inspection
- General Body Inspection - Pre-Race Engine Inspection
- Fuel Samples from Fuel Cell - Overall Inspection

***** Note:** There will be post-race inspection in the designated inspection area following the completion of Victory Lane Ceremonies.

Race Weights:

- Sportsman Modified "602" GM Crate Engine = 2,600 lbs. / 56% Left Side – Cars may be scaled post-race for analysis
- Cars may be required to scale at any time during the event. For this event, cars must be scaled following their final practice run and prior to the start of the feature. If any car fails to meet the required weight or scale during a mandated time they must start the next event in which they are scheduled to compete from the rear of the field.

Race of Champions "15" Starting Lineup:

1.) Qualifying Race (Redraw)	2.) Qualifying Race (Redraw)
3.) Qualifying Race (Redraw)	4.) Qualifying Race (Redraw)
5.) Qualifying Race (Redraw)	6.) Qualifying Race (Redraw)
7.) Qualifying Race (Redraw)	8.) Qualifying Race (Redraw)
9.) Qualifying Race (Redraw)	10.) Qualifying Race (Redraw)
11.) Qualifying Race (Redraw)	12.) Qualifying Race (Redraw)
13.) Qualifying Race	14.) Qualifying Race
15.) Qualifying Race	16.) Qualifying Race
17.) Qualifying Race	18.) Qualifying Race
19.) Qualifying Race	20.) Qualifying Race
21.) Qualifying Race	22.) Qualifying Race
23.) Qualifying Race	24.) Qualifying Race
25.) B-Main	26.) B-Main
27.) B-Main	28.) B-Main
29.) B-Main	30.) B-Main

Race of Champions Rocket Performance 15 pay out: Note: For this event, pay off will be made via mail after the conclusion of the event.

1	\$372.72
2	\$175
3	\$150
4	\$125
5	\$125
6	\$125

2022 Race of Champions Sportsman Modified Series Schedule:

NP=Non-Point event / SP = Show Up Point event

**All events subject to change.*

DATE	TRACK	LAPS	POINT SCHEDULE	TIRE	WINNER
Friday, June 3	Spencer Speedway	15	100	1070	Andrew Lewis, Jr.
Friday, July 17	Spencer Speedway	15	100	1070	Andrew Lewis, Jr.
Friday, July 1	Spencer Speedway	15	100	1070	Andrew Lewis, Jr.
Friday, August 5	Spencer Speedway	15	100	1070	Andrew Lewis, Jr.
Friday, August 19	Spencer Speedway	15	100	1070	Alyssa Leaty
Friday, September 2	Spencer Speedway	15	100	1070	Andrew Lewis, Jr.
Saturday, September 24	Lake Erie Speedway	15	150	1070	

2022 Decal and Contingency Award Programs

- More partners and awards may be added during the season.
- In order to be eligible for awards teams must display decal on left and right side of car in a visible location near the A-Pillar.
- No alterations may be made to decals and logos may not be reproduced or incorporated into wraps.
- If the initial winner of an award is not running the decal, all awards will shift to the next eligible competitor as specified above.

- **Mandatory for all competitors on top/forward corner of door (first, second, third and fourth decal):**

- No specific award for any of the mandatory below;



Decal Required for Program Participation.



RACE OF CHAMPIONS SUPER STOCK GENERAL TIRE POLICY

- The Race of Champions 602 Sportsman Modified Series will use the Hoosier 1070 tire exclusively.
- The Race of Champions will permit Race of Champions 602 Sportsman Modified Series Teams to begin and run the season with a maximum of (6) inventoried tires. Four (4) must be used on the car and two (2) as spares. Inventory tires will be kept by the barcode and must not be interchanged between teams without approval. The tire is referenced to a specific car number on an inventory sheet. **(Tires may be purchased anywhere only six (6) will be kept in inventory).**
- Only the Hoosier 1070 tire will be permitted for competition during the 2022 season.
- Teams will be responsible for their inventory of tires and must turn in an inventory sheet at each event prior to the qualifying race. Each inventory sheet will be tracked in a master spreadsheet. The tires must match the inventory sheet during inspection after any qualifying event and feature events. In the event that a team does not turn in an inventory sheet, that team may not be eligible to participate in the event.
- Used tire purchases will be permitted. The used inventory will be based on the tires in rotation and inventory used in the Sportsman Modified division. Tires will be purchased from the teams and checked out of the Sportsman Modified inventory and into the Race of Champions 602 Sportsman Modified Series inventory based on the car number for the purchasing team. Inventory will be kept utilizing the Race of Champions 602 Sportsman Modified Series Inventory and the Sportsman Modified Inventory.
- All wheels and unmounted tires must be labeled (inside unmounted tires) with car number and/or team name.
- In the event a tire loses both the inside and outside barcode, that tire must come out of all inventories and will not be permitted for use.

RACE OF CHAMPIONS WEEKEND HOTEL INFORMATION

Holiday Inn Erie

2260 Downs Drive

Erie, PA 16509

Toll Free: 800-465-4329

Local: 814-205-0271

Rate: Varies – Room Block has reached Cut Off

Booking Information: To get special “Race of Champions Weekend Rate” please call the hotel’s toll free number or local line. A link will be provided when available.

Hampton Inn Erie - South

8050 Old Oliver Road

Erie, PA 16509

Local; 814-866-6800

Rate: Varies – Room Block has reached Cut Off

Booking Link: To get special “Race of Champions Weekend Rate” please call the hotel’s local line. A link will be provided when available.

Courtyard by Marriott - Bayfront

2 Sassafras Pier

Erie, PA 16507

Local; 814-636-1005

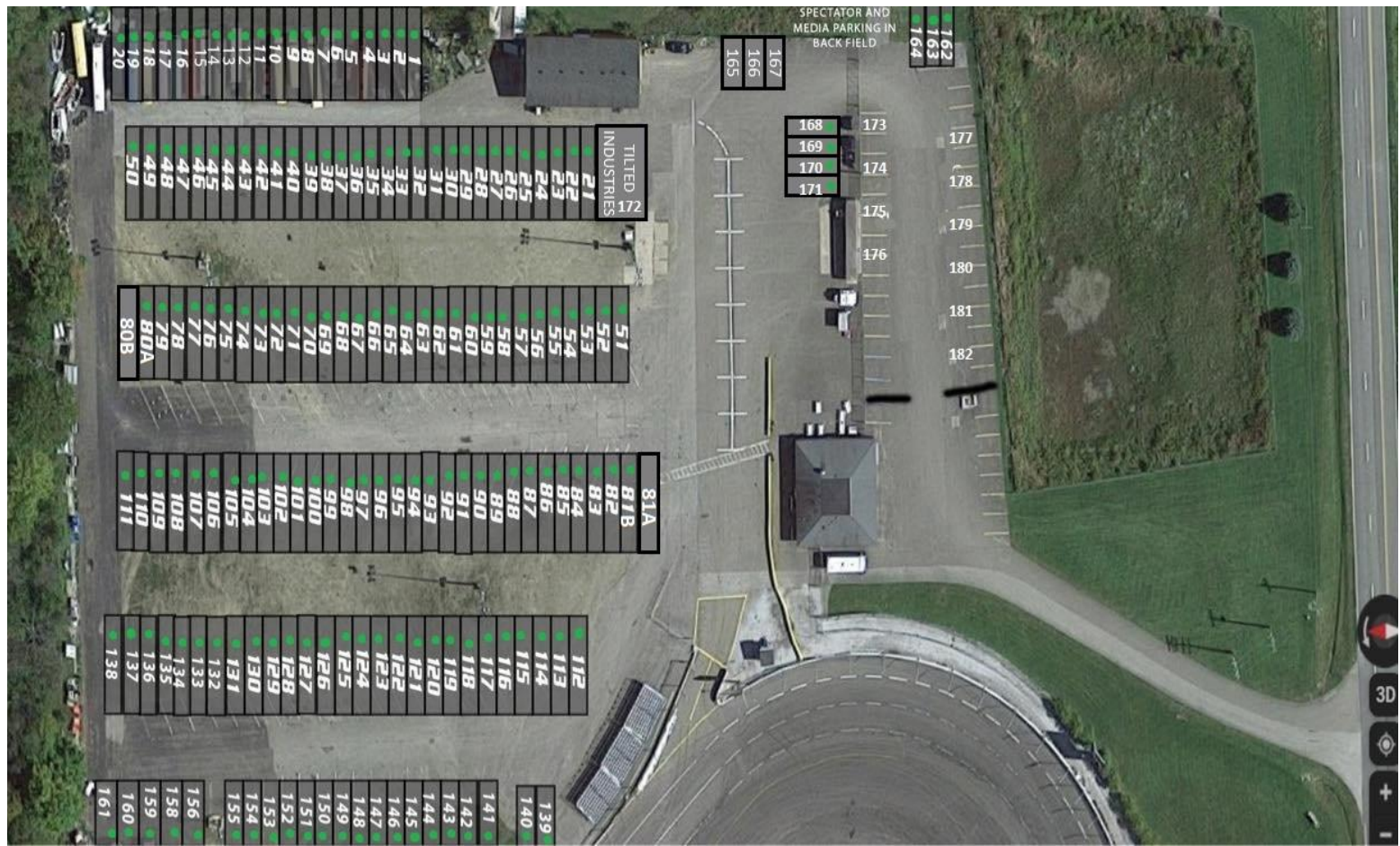
Rate: Varies – Room Block has reached Cut Off

Booking Link: <https://www.marriott.com/event-reservations/reservation-link.mi?id=1606762775526&key=GRP&app=resvlink>


*eof

NOTE: Please note that we have changed hauler parking. Haulers will no longer be parked on an angle – this diagram is only indicates traffic flow. The new hauler diagram follows this diagram, along with a photo from an event in which Lake Erie Speedway has implemented the new system.





Legend

 Lake Erie Speedway

**OVER
NIGHT
CAMPING
\$50 for
weekend**

General Admission Parking

**GA Parking
Overflow**

**Grandstand
Entrance for
Parking**

**Competitor Parking
No Over Night
Parking Based on
Divisions Running
No Personal
Vehicles**

Pit Area Parking

**Pit
Entrance**

Google Earth

©2017 Google

400 ft





**2022 Presque Isle Downs & Casino Race of Champions Weekend
Featuring the 72nd Annual Race of Champions 250
FAQs**



Q: What is the Race of Champions weekend?

A: The Race of Champions is a sanctioning body presenting Modified and Stock Car racing on asphalt and dirt surfaces throughout the Northeast, with events in New York, Pennsylvania and New Jersey. The 72nd annual Race of Champions weekend will take place in 2022 at Lake Erie Speedway in North East, Pennsylvania as part of Presque Isle Downs & Casino Race of Champions Weekend and is the second-longest consecutive auto-racing event in North America, second only to the Indianapolis 500.

Q: When and where will the Race of Champions Weekend take place?

A: Lake Erie Speedway- 10700 Delmas Drive, North East, PA 16428 –
Friday, September 23, Saturday, September 24 and Sunday, September 25,
2021

Q: What is the total purse for Race of Champions Weekend?

A: Over \$100,000 in purse payout and contingency prizes are up for grabs.

TICKETS & SEATING

Q: Can I buy my ticket on the day of each show?

A: Yes, General Admission tickets will be available for purchase at the front ticket office, and pit passes will also be for sale at the pit window.

Q: Where do I go for “Will Call” at Lake Erie Speedway? A:

Will Call is located at the front gate ticket window.

Q: How much are Race of Champions Weekend Grandstand tickets and pit passes?

A: Friday, September 24th

Grandstand (G/S)

Adult General Admission Tickets Adult –

FREE

Senior- FREE Children 6-16- FREE

Children under 5- FREE

Pit Pass- Members \$30 – Also available on the PitPay App for contactless point of purchase.

Saturday, September 25th

Grandstand (G/S)

Adult General Admission Tickets – \$20 Senior General

Admission Tickets- \$17

Reserved Seat Tickets (Regardless of Age)- \$25

Children (6-16) General Admission Tickets- \$10

Children under 5 General Admission Tickets- Free

Pit Pass- \$45 – Also available on the PitPay App for contactless point of purchase.

Sunday, September 26th

Grandstand

Adult General Admission Tickets – \$35 Senior General

Admission Tickets- \$33

Reserved Seat Tickets (Regardless of Age)- \$40 Children (6-16)

General Admission Tickets- \$12 Children under 5 General

Admission Tickets- Free

Pit Pass- \$65

COMBO PIT PASS- FRIDAY/SATURDAY/SUNDAY

3-Day Pit Pass- \$130:

Q. How much is parking at Race of Champions Weekend?

A: There is no charge for general parking.

Q: What sections are designated as reserved seating at Lake Erie Speedway?

A: Section E rows J through T are marked for reserved seating.

Q: Are there any areas where smoking is allowed?

A: Behind the main grandstand at each end of the main concourse. There is no smoking or vaping in the stands or under the stands.

Q: What is the age limit for the pit area at the event?

A: There is no age limit, but all guests must sign a "release form" to enter. If you or anyone in your party is age 16 or younger, a minor release must also be filled out.

PARKING & ACCOMMODATIONS

Q: Where can I find accessible/handicap parking?

A: Accessible handicap parking is located behind the main entrance. The handicap spots are visibly signed, and you must display valid handicap parking credentials.

Q: Is there camping available at the Lake Erie Speedway?

A: Campsites are available for \$50 each for the duration of the weekend. This is dry camping. You can call the racetrack to reserve them in advance (814)725-3303

Q: Where do I register if I pre-reserved a camping spot?

A: When you arrive at the main parking lot, there will be an attendant that can direct you in the right direction.

Q: When does camper staging begin and when can I move my camper onto the property?

A: Campers can start moving in Thursday (9/24.) You must see the camping attendant upon pulling into the parking lot and picking out a camping spot.

Q: Are there any specific camping rules or regulations for the Race of Champions Weekend that I should know about?

A: The following are rules and regulations that you must adhere to while camping during Race of Champions Weekend.

- fires are permitted but they must be contained and off the ground.
- garbage bags will be distributed upon arrival, please leave it at your campsite at the end of the weekend and it will be picked up.
- All motorized vehicles (golf carts, ATVs, side by sides, etc.) must be parked one hour after racing is completed
- Noise level at campsites after racing must be kept to a minimum. Use common courtesy with generators, music, etc.
- In the case of an emergency, please call 911.

Q: Are there hotels offering a discounted rate for the event?

A: Below is a list of the hotels that have partnered with us for the event.

Holiday Inn Erie

2260 Downs Drive
Erie, PA 16509

Toll Free: 800-465-4329 **Local:** 814-205-0271

Rate: Varies – Room Block has reached Cut Off

Booking Information: To get special "Race of Champions Weekend Rate" please call the hotel's toll free number or local line. A link will be provided when available.

Hampton Inn Erie - South

8050 Old Oliver Road
Erie, PA 16509

Local: 814-866-6800

Rate: Varies – Room Block has reached Cut Off

Booking Link: To get special "Race of Champions Weekend Rate" please call the hotel's local line. A link will be provided when available.

Courtyard by Marriott - Bayfront

2 Sassafras Pier
Erie, PA 16507

Local: 814-636-1005

Rate: Varies – Room Block has reached Cut Off

Booking Link: <https://www.marriott.com/event-reservations/reservation-link.mi?id=1606762775526&key=GRP&app=resvlink>

GENERAL QUESTIONS

Q: How can I meet the drivers during the Race of Champions weekend?

A: See the drivers and crews as they prepare up close by purchasing a pit pass, or by visiting the pits after the conclusion of the day's events.

Q: Will the pits be open after the races?

A: The pit area will be open for one (1) hour after the conclusion of each night of racing.

Q: Are coolers permitted at the Lake Erie Speedway?

A: They are not.

Q: What is the policy on pets?

A: Pets need to have medical paperwork, and they need to be service pets.

Q: Do drivers need to register their cars?

A: Yes, all drivers need to enter and register.

Q. Do Four-Wheelers, Golf Carts and Pit Vehicles require anything?

A. Yes, they will require a registration sticker and will be issued by Race of Champions Officials at the Series Trailer. There will also be a curfew for these vehicles one hour after the completion of racing events.

Q: Are there any ATMs at Lake Erie Speedway?

A: No. They do accept credit at the box office and concession stands

Q: What do we do if we have an emergency?

A: Notify a Speedway Employee,

Q: What items are prohibited from speedway grounds?

A: Outside food and beverages, umbrellas, coolers, pocket knives, weapons, guns (even if licensed to carry), fireworks, inflatable devices (ex. Beach balls)

Q: Is there a “Lost and Found” drop-off and pickup location?

A: Any found items can be dropped off at the Box Office, and people can go there if anything is lost.

Q: Where are the closest medical facilities?

A: Saint Vincent Hospital/Allegheny Health Network
232 West 25th St
Erie PA 16544

UPMC Hamot
201 State St
Erie PA 16550

Lake Erie Speedway, North East, Pennsylvania

[illegible]

Race of Champions 250
 Lake Erie Speedway, North East, Pennsylvania
 *All times and events subject to change



DATE	TIME	EVENT
Sunday – 9/25	9:00 am	Pit Gates Open (Haulers Enter)
	9:15 am	Inspection and Draw for Group Begins
	10:00 am	Modified Tire Sales Begin (Tire Sale Order; Group 3, Group 4, Group 1, Group 2)
		Driver's Meetings by Divisions posted; Race of Champions Modifieds Modifieds; Street Stocks; TQ Midgets; Four Cylinder Dash Series – Overall Meeting
	11:00 am	Practice by Division (Two Rounds);
		Modifieds Four Cylinder Dash Series Street Stock Series TQ Midget Series
	1:15 pm	Qualifying Races Begin
		Modified Series – Green-White-Checker Qualifying (Overall Top-6 locked in to the 72 nd Annual Race of Champions 250) Four Cylinder Dash Series B-Main (8-laps) TQ Midget Series (8-laps) Street Stock Series (8-laps) Modified Series (10-laps) Four Cylinder Dash Series B-Main (8-laps) Modified B-Main if necessary (12-laps)
	Followed by; Followed by;	TQ Midget Series Feature – “Harry Macy Classic” (29-laps) Victory Lane
	Followed by; Followed by;	Four Cylinder Dash Series Feature – (30-laps) Victory Lane
	Followed by; Followed by;	Street Stock Series Feature – (30-laps) Victory Lane
	3:30 pm APPROXIMATE	Pre-Race, Cars begin to Stage for 72 nd Annual Lucas Oil Race of Champions 250
	3:45 pm	Race of Champions Hall of Fame Inductions (if any) and special awards
	3:55 pm	“KIDS RoC” on Front Stretch at Start / Finish Line
	4:00 pm	Driver's Introductions
	4:10 pm	“KIDS RoC” Pledge of Allegiance
	4:15 pm	Invocation / Anthem
	Command to Start Engines – 72 nd Annual Lucas Oil Race of Champions 250 (250-laps)	
	6:30 pm	Pit Are Closed



THE GREATEST TRADITION IN MODIFIED RACING!!



**RACE OF CHAMPIONS
WEEKEND**

**SEPTEMBER 23RD-25TH
AT LAKE ERIE SPEEDWAY**

**FRIDAY (9/23) - PRACTICE FOR ALL DIVISIONS
FOAR SCORE DASH SERIES**

**SATURDAY (9/24) - FOAR SCORE DASH SERIES
STREET STOCKS
SUPER STOCKS
ASPHALT SPORTSMAN**

**SUNDAY (9/25) - FOAR SCORE DASH SERIES
TQ MIDGETS
LATE MODELS**

72ND ANNUAL LUCAS OIL RACE OF CHAMPIONS 250



GET YOUR TICKETS TODAY!

**WWW.LAKEERIESPEEDWAY.COM OR CALL (814) 725-3303
FOR MORE INFORMATION WWW.ROCMODIFIEDSERIES.COM**